



United Nations  
Economic Commission for Africa



**Kigali, Rwanda**  
**June 25-27, 2025**

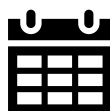
## PROGRAM CONTENTS

<b>GENERAL INFORMATION .....</b>	<b>2</b>
Location .....	2
WiFi .....	2
<b>WHOVA MOBILE CONFERENCE APP .....</b>	<b>3</b>
<b>SPECIAL RECOGNITION .....</b>	<b>4</b>
Conference Organizers.....	4
Co-Chairs.....	5
Program Committee.....	5
Abstract Reviewers.....	5
Ken Pearson Travel Funding Award .....	6
Alex Meeraus / Thomas Rutherford Travel Funding Award .....	7
Wallace E. Tyner Travel Funding Award .....	8
PANAP Conference Participation Grant for African Researchers.....	9
Young Scholars Initiative Funding Award .....	10
GTAP Conference Scholars Program.....	12
<b>CONFERENCE VENUE FLOORPLAN .....</b>	<b>13</b>
<b>TUESDAY, JUNE 24 .....</b>	<b>14</b>
Schedule .....	14
<b>WEDNESDAY, JUNE 25 .....</b>	<b>15</b>
Distinguished Plenary Speaker .....	15
Schedule Overview.....	18
Detailed Schedule .....	19
<b>THURSDAY, JUNE 26.....</b>	<b>36</b>
Distinguished Plenary Speaker .....	36
Schedule Overview.....	37
Detailed Schedule .....	38
<b>FRIDAY, JUNE 27 .....</b>	<b>52</b>
Distinguished Plenary Speaker .....	52
Schedule Overview.....	53
Detailed Schedule .....	54
<b>SATURDAY, JUNE 28 .....</b>	<b>67</b>
Post-Conference Event .....	67
<b>2026 CONFERENCE PREVIEW .....</b>	<b>68</b>
<b>SESSION PARTICIPANT INDEX.....</b>	<b>69</b>
<b>PARTICIPANT LIST.....</b>	<b>73</b>
<b>GTAP UNIVERSITY (GTAP-U) .....</b>	<b>78</b>
<b>JOURNAL OF GLOBAL ECONOMIC ANALYSIS.....</b>	<b>79</b>

## GENERAL INFORMATION

**Location**

Radisson Blu Hotel & Convention Centre  
KG 2 Roundabout  
Kigali, Rwanda

**Dates**

June 25-27, 2025

**Time Zone**

Central Africa Time  
(CAT, UTC+2)

**WiFi**

**Network:** 2025GTAPConf

**Password:** 2025GT@PConf

**Objective and Format**

The goal of the annual conference on economic analysis is to promote the exchange of ideas among economists conducting quantitative analysis of global economic issues. The conference features specially organized and contributed paper breakout sessions. The organized sessions have been developed by members of the GTAP Network to highlight a specific area of research and/or policy analysis. The contributed paper breakout sessions were selected through a peer review process and subsequently grouped to reflect the varied themes being addressed by members of the GTAP Network. The content of these sessions reflects the overall conference themes.

***"Accelerating Economic Transformation, Resilience, Diversification, and Job Creation"***

- Advancements and resilience in value chains and economic development
- Africa in the global economy
- Seizing the benefits of the digital economy for growth
- Tackling the economics of regional integration and cooperation
- What the green transition means for Africa
- Filling data gaps - understanding the informal economy
- Food security and nutrition
- Fragmentation of global trade
- Promoting gender in development
- Reducing poverty and inequality
- Technology adoption and infrastructure development

Conference papers are available through the conference homepage: [www.gtap.org/events/conferences/2025/](http://www.gtap.org/events/conferences/2025/) ISSN 2160-2115 (online)

**Stay Connected with GTAP!**

Connect with us on social media and subscribe to the GTAP-L Mailing List to keep up-to-date on all things GTAP!



@GTAP\_Purdue



@GTAPPurdue



GTAP



GTAPPurdue



GTAP-L Mailing List

**#GTAPConference**

## WHOVA MOBILE CONFERENCE APP



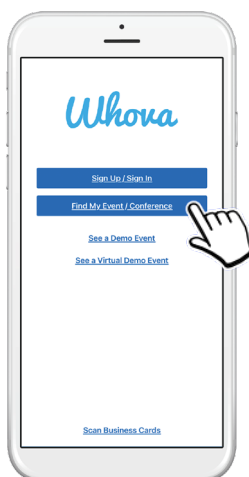
**Whova** is the mobile app used to house the conference program, streamline communication during the conference, and facilitate attendee engagement. iOS and Android users can download the free Whova app through their device's app store.



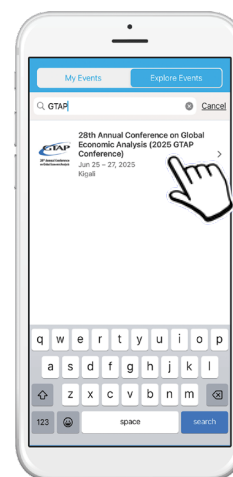
## Step 1 – Dowload Whova App



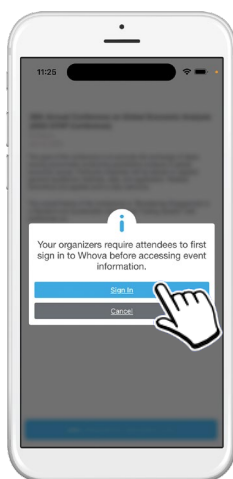
## Step 2 – Tap “Find My Event”



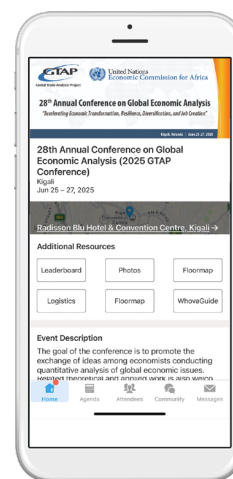
## Step 3 – Search for “GTAP”, tap result



## Step 4 – Tap “Join”

Step 5 – Log in using the same email used on your conference registration

## Step 6 – Enjoy the conference!



**Invitation code:**  
GTAPConf2025 (if prompted)



## Useful Tip

Allow notifications from Whova to ensure you receive schedule updates and other communication during the conference.

## Conference Organizers



### Global Trade Analysis Project

The Global Trade Analysis Project (GTAP) is a global network of researchers and policy makers conducting quantitative analysis of international policy issues within an economy-wide framework. GTAP is coordinated by the Center for Global Trade Analysis, which is housed in the Department of Agricultural Economics at Purdue University. The Center for Global Trade Analysis' mission is to provide leadership in economic policy analysis through better data, fostering collaboration, and research. The centerpiece of Global Trade Analysis Project is the GTAP Data

Base, a fully documented and publicly available, analytical data base for the global economy, which contains detailed country data, linked through bilateral trade, transportation and protection. Accompanying this data base is a set of GTAP-based models used and developed by network members. The GTAP Data Base and analytical framework are used by thousands of researchers around the world. Originally, the majority of the research was related to international trade policy issues. Today, GTAP is still the most widely used tool for trade policy, but its use has expanded into poverty, international migration, foreign investment, climate change, environment, energy, and biofuel policies. GTAP has become a common "language" for many of those conducting analysis of global policy issues with GTAP-based results becoming increasingly influential in decision making around the world in trade, climate change, energy and the environment.

[www.gtap.agecon.purdue.edu](http://www.gtap.agecon.purdue.edu)



### United Nations Economic Commission for Africa

Established by the Economic and Social Council of the United Nations in 1958 as one of the UN's five regional commissions, ECA's mandate is to promote the economic and social development of its member States, foster intra-regional integration, and promote international cooperation for Africa's development. Made up of 54 member States, and playing a dual role as a regional arm of the UN and as a key component of the African institutional landscape, ECA is well positioned to make unique contributions to address the Continent's development challenges. ECA's strength derives from its role as the only UN agency mandated to operate at the regional and subregional levels to harness resources and bring them to bear on Africa's priorities. The contribution by ECA to the task of carrying forward the 2030 Agenda and Agenda 2063 is centred on the Commission's three core functions, namely, its convening function, its function as a think tank and its operational function, as articulated below:

- a) Convening function: providing dedicated regional intergovernmental and multi-stakeholder platforms with strong ownership by member States, regional bodies and development banks that result in agreed development policy frameworks, standards and action plans that reinforce multilateralism at the regional and subregional levels;
- b) Think-tank function: conducting multisectoral research and analysis that nurture the integration of the three pillars of sustainable development, and promote peer learning, innovative thinking and the advocacy of public policies while fostering intersectoral linkages and synergies;
- c) Operational function: provision of policy advice at the country level through direct demand-based support to member States in areas related to its normative and analytical work and in collaboration with the United Nations system at the country level.

Our mission is to deliver ideas and actions for an empowered and transformed Africa; informed by the 2030 Agenda and Agenda 2063. The mission is guided by ECA's five new strategic directions which are:

- a) Advancing ECA's position as a premier knowledge institution that builds on its unique position and privilege to bring global solutions to the continent's problems and take local solution to the continent;
- b) Developing macroeconomic and structural policy options to accelerate economic diversification and job creation;
- c) Designing and implementing innovative financing models for infrastructure, and for human, physical and social assets for a transforming Africa;
- d) Contributing solutions to regional and transboundary challenges, with a focus on peace security and social inclusion as an important development nexus;
- e) Advocating Africa's position at the global level and developing regional responses as a contribution to global governance issues.

<https://www.uneca.org/>

## SPECIAL RECOGNITION

## Co-Chairs

- **Channing Arndt**, Center for Global Trade Analysis, Department of Agricultural Economics, Purdue University
- **Stephen Karingi**, United Nations Economic Commission for Africa

## Program Committee

Ousmane Badiane	Shinichiro Fujimori	Elijah Munyi	Komi Tsowou
Antoine Bouët	Trudi Hartzenberg	Brian Mureverwi	Dominique van der Mensbrugghe
Ole Boysen	Ken Itakura	Mustapha Sadni Jallab	
Shenjie Chen	Maryla Maliszewska	Jan Schmitz	
Christian Arnault Emini	Andrew Mold	Fousseini Traore	

## Abstract Reviewers

Kumar Abhishek	Rafael Garaffa	Socrates Majune	Andrew Schreiber
Marcel Adenauer	Giovani William Gianetti	Asiya Maskaeve	Abdoulaye Seck
Adeel Ahmed	Insaf Guedidi	Daniel Mason-D'Croz	Manoj Sharma
Abdallah Akintola	Houssein Guimbard	Tais Menezes	Khalid Siddig
Sara Allali	Richa Gupta	Simon Mevel	Thiago Simonato
Alessandro Antimiani	Angelo Gurgel	Justine Mogendi	Ganesh Sivamani
Ronald Jeremy Antonio	Haned Hadjer	Abdulaziz Abdulsemed Mosa	Farzad Taheripour
Tijen Arin	Mussie Mindaye Hailesilassie	William Mougnot	Karen Thierfelder
Christine Arriola	Iman Haqiqi	Marian Mraz	Karen Thome
Sara Ashour	Amina Harbi	Jazib Mumtaz	Georgios Trachanas
Jonathon Becker	Katharina Hauck	Brian Mureverwi	Trang Tran
Cecilia Bellora	Cedric Hodges	Laura Naliaka	Marinos Tsigas
Lauren Benavidez	Nobuhiro Hosoe	Ismaelline Eba Nguema	Githmi Udagedara
Ruben Bibas	Shih-Hsun Hsu	Oluwole Ogunyemi	Jared Vaile
Heinrich Bohlmann	Sionegael Ikeme	Zoryana Oleksyuk	Hugo Valin
Kirsten Boysen-Urban	Maros Ivanic	Laurent Olouko	Toon Vandyck
Micah Cameron-Harp	Himanshu Jaiswal	Oluwasola Emmanuel Omoju	Renato Vargas
Rajesh Chadha	Yan Jin	Miriam Omolo	Beatriz Velazquez
Jean Chateau	Tewodros Kahsay	Jessica Osanya	Nelson B. Villoria
Shenjie Chen	Thierry Kame Babilla	Samira Ouala	Adam Walker
Margaret Chitiga	Sangita Gayatri Kannan	Yacouba Ouedraogo	Ming Wang
Arthur Chopkeng	Olayinka Idowu Kareem	Rebecca Owusu	Xiaomei Wang
Samuel Maxime Coly	Zameelah Khan Jaffur	Jione Park	Zhan Wang
Cassius B. Cooper	Ayoub Kharbouche	Hantang Peng	Ardhi Wardhana
Nancy Daccache	Yong-Gun Kim	Maria Filipa Seara Pereira	Alex Watkins
Bernhard Dalheimer	Nicolas Kreitmair	George Philippidis	Asanka Wijesinghe
Senakpon Dedehouanou	Marijke Kuiper	Angga Pradesha	Michael Williams
Achille Carlos Deffo	Hardiyono Kurniawan	Zike Qi	Joseph Wilson
Rob Dellink	Emma KurtzFreilich	Chenfei Qu	Niven Winchester
Meryem Demirkaya	Mapula Hildah Lefophane	Manitra A. Rakotoarisoa	Glyn Wittwer
Mariam Diallo	Debbora Leip	Radouane Raouf	Rayan Wolf
Souleymane Sadio Diallo	Hebin Lin	Srabashi Ray	Yazhen Wu
Christian Arnault Emini	India Lindsay	Jonathan Rhodes	Amsalu Woldie Yalew
Emanuele Ferrari	Valentyn Litvinov	Dewey Robertson	Ge Yin
Joaquim Bento Ferreira-Filho	Jing Liu	Hugo Rojas-Romagosa	Wusheng Yu
Hugo Ferrer Perez	Xianglong Locky Liu	Leysa Maty Sall	Mei Yuan
Yannick Fouda	Hans Lofgren	John Saunders	Chahir Zaki
Alan Fox	Yingying Lu	Bouraima Sawadogo	Yu Zheng
Elizabeth Frayse	Jonas Luckmann	Florian Schiffmann	
Sherwin Gabriel	Hendrik Mahlkow	John Schoeneman	



## SPECIAL RECOGNITION

**Ken Pearson Travel Funding Award**

In recognition of the many contributions made by the late Professor Ken Pearson to the GTAP Network, the Centre of Policy Studies, Victoria University has provided funding in his name aimed to support the participation of promising young researchers at the GTAP Conference and encourage their contribution to the use and further development of analytical software for CGE modelling, following in his tradition.

Recipient(s) were selected based on the following criteria: 1) an early career researcher within five years of the start of their research career; 2) active in undertaking applied model-based analyses of real-world problems using GEMPACK or related software; and 3) paper accepted into the GTAP Conference.



Ken Pearson's early career was as an outstanding mathematician. In the 1970s, he became Reader and Chairman in Mathematics at La Trobe University, Australia. In his teaching role, he investigated the possibility of drawing on economics rather than physics for relevant examples. In this process, he came across the newly emerging field of applied (or computable) general equilibrium modelling. Long before the economists, Ken recognized the need for software that would not only solve large scale economic models but would also be a vehicle: for organizing data; for analyzing results; for transferring models between researchers; and for storing models in a computationally accessible way which would allow them to be accessed at other times and by other researchers. By the mid-1980s, he had responded to this need by taking up a visiting position at the Impact Research Centre (Melbourne University) and creating GEMPACK. In 1992, Ken moved to the Centre of Policy Studies (CoPS, then located at

Monash University). At CoPS, he was appointed Professorial Fellow in 1999, and held the position of Deputy Director from 2000 to 2004. He retired in 2014, with the position of Director, GEMPACK passing to Mark Horridge. Ken died of cancer on May 12, 2015. Throughout his illness, he was stoic, always cheerful, and grateful for a good life. In a summary of Ken's contribution to the GTAP, Tom Hertel wrote, *"Those of us who had the privilege of working closely with Ken count our collaborations with him as among the most stimulating and rewarding of our careers. Ken's keen intellect and his background in theoretical mathematics allowed him to quickly grasp the essence of whatever modeling challenge we posed."*

**Recipient****Jazib Mumtaz**

Lecturer, SZABIST University Karachi (Pakistan)

**Evaluating Inclusive Growth Models: Case for Pakistan** (#7416)

Session #36, Pg. 64

Jazib Mumtaz is an accomplished economist with extensive experience in policy development, economic modelling, and forecasting. He is currently contributing to a research think tank with significant projects on social policy, regional trade, and energy. Holds a PhD in Applied Economics from SZABIST University Karachi, specializing in income distribution and household welfare. His expertise spans labor economics, distributive analysis, general equilibrium and economic forecasting. Passionate about sustainable development, he actively contributes to academic research, policy briefs, and international conferences.

**Alex Meeraus / Thomas Rutherford Travel Funding Award**

In recognition of Meeraus and Rutherford's contributions, the GAMS Development Corporation has provided funding in their names aimed to support the participation of promising young researchers at the GTAP Conference and encourage their contribution to the use and further development of analytical software for CGE modelling. Recipient(s) were selected based on being the following criteria: 1) an early career researcher within five years of the start of their research career; 2) active in undertaking applied model-based analyses using GAMS or related software; and 3) paper accepted into the GTAP Conference.

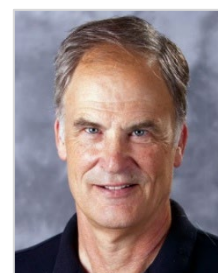
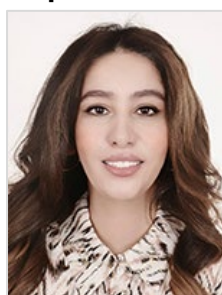


Alexander Meeraus is the founder and CEO Emeritus of the GAMS Development Corporation, a high-tech international development and consulting firm in the area of strategic and operation planning systems and software applied to problems in industry, government and academia.

After finishing his studies in mechanical engineering at the Technical University in Vienna, he came to the US, worked for General Electric in the development of engineering software for computer aided design and joined the World Bank's Development Research Center in 1972. His research focused at investment planning in the process industries, agriculture and water resources. He led the development team for the General Algebraic Modeling System (GAMS), now widely used around the world for strategic and operational planning and scheduling. In 1987, he left the Bank to fully develop the GAMS software into a commercially viable product. In 1988 he was awarded the INFORMS Computing Society Price for the development of GAMS. In the Celebrating 50 Years of Operations Research festschrift, GAMS was selected as the 1988 milestone. In 2012, GAMS shared the INFORMS Impact Price for the development of Algebraic Modeling Systems.

Thomas Rutherford received his Ph.D. in operations research from Stanford in 1987 and is currently a Professor of Agricultural and Applied Economics at the University of Wisconsin-Madison. Rutherford has had a career arc that has touched the most challenging global policy issues of our times—trade,

energy markets, and climate change. He has combined his keen interest in economic policy making while advancing the frontiers of economic modeling in spatial, industrial, mathematical and dynamic economics. Another component of Tom's portfolio is the development of algorithms and software that has led to major improvements in quantitative tools that facilitate the ability to undertake policy analysis. The best known of these tools is the Mathematical Programming System for General Equilibrium (MPGS), a modeling environment designed to facilitate the development of GE models that is combined with the General Algebraic Modeling System (GAMS). He developed a global model in MPGS coupled to the GTAP Data Base (known as GTAPinGAMS) that has been widely used and lowered the entry cost to global economic modeling for GAMS users.

**Recipient****Fatiha Agueny**

PhD Student in Applied Economics, University Mohamed V (Morocco)

**The Impact of Indirect Taxes on Labor Income and Employment in Morocco: A dynamic CGE**

**Modeling** (#7509)

Session #10, Pg. 31

Fatiha Agueny is a PhD candidate in Applied Economics at the Faculty of Legal, Economic, and Social Sciences - Agdal, University Mohammed V of Rabat, Morocco, and a member of the Laboratory of Applied Economics. Her research focuses on measuring and analyzing income inequality in Morocco, with a particular emphasis on the impact of public policies on income disparities and the labor market. She adopts an ex-ante evaluation approach based on Computable General Equilibrium (CGE) modeling, microsimulation, and macro-econometric techniques to assess the effectiveness of fiscal and social policies in reducing inequality. Her research interests also extend to labor market dynamics, regional development, and the evaluation of public policy impacts on economic disparities. Through her work, she aims to contribute to evidence-based policymaking that fosters inclusive economic growth. She has published two articles: "Survival, Health, and Early Childhood Education in Morocco: What Impact on Future Regional Productivity?" (2023) and "Impact of Public Education Expenditure on Income, Well-being, and the Labor Market in Morocco: An Ex-ante Analysis Using a Computable General Equilibrium Model" (2024), which were published in the French Journal of Economics and Management (Revue Française d'Economie et de Gestion).



## Wallace E. Tyner Travel Funding Award

In recognition of the late Professor Wallace E. Tyner, who served as Senior Policy Advisor to the Center for Global Trade Analysis for many years and was a strong proponent for establishing the center at Purdue University in the early 1990s, the Center for Global Trade Analysis has provided funding in his name to support the participation of a promising young researcher at the annual GTAP conference. Recipient(s) were selected based on the following criteria: 1) an early career researcher undertaking policy-relevant, research at the interface of the economy, energy and the environment with preference given to research that bridges disciplinary boundaries; and 2) paper accepted into the GTAP Conference.



**Global Trade Analysis Project**

Center for Global Trade Analysis  
Department of Agricultural Economics  
Purdue University



Professor Tyner's research interests were broad, but centered mostly in the areas of climate, energy, agricultural, and natural resource policy analysis. His work in energy economics encompassed oil, natural gas, coal, oil shale, biomass, biofuels from agricultural sources, and solar and wind energy. Much of work focused on economic and policy analysis for biofuels and the interplay between biofuels policies and other energy policies. As Department Head of Purdue's Department of Agricultural Economics from 1989-2002, Wally oversaw the establishment of the Center for Global Trade Analysis and facilitated the formation of the GTAP Consortium – a key ingredient in GTAP's longevity. When he returned to the faculty in 2003, Wally initiated a cutting-edge program of research related to biofuels and their linkages to energy, agriculture and the environment. In this context, he became a heavy user of the GTAP Model and its derivatives: GTAP-AEZ and GTAP-BIO. His research in this area earned him lifetime career

recognitions from his professional associations (AAEA, AAAS and IAAE), industry (US Association for Energy Economics), as well as from Purdue University (the Morrill Award for outstanding career achievements with a societal impact), among many other awards. Wally was a great role model and advocate for policy-relevant, inter-disciplinary research. He was also an excellent mentor for students and young professionals.

## Recipient



### Joel Christoph

PhD Student, European University Institute (Italy)

### Integrating Advanced CGE Modeling and AI-Based Scenario Analysis for Climate Policy (#7560)

Session #32, Pg. 60

Joel Christoph is a PhD candidate in Economics at the European University Institute. His research employs quantitative modeling to address global challenges in trade, climate policy, and sustainable development. Recognized with awards and having provided consultancy for international organizations, he is committed to developing innovative policy solutions that foster a more resilient and inclusive global economy.

## PANAP Conference Participation Grant for African Researchers

The objective of the Pan-African Network for Economic Analysis of Policies (PANAP) is to foster collaboration between researchers and policymakers in and for Africa, and to encourage their joint work on selected topics linked to policy priorities that reinforce the resilience and enhance the development of sustainable African agriculture and food sectors. Furthermore, PANAP provides support for the development of quantitative policy analysis skills among African researchers and institutions. The network also provides opportunities and support to African researchers to exchange knowledge with their counterparts around the globe.

PANAP is a joint initiative between the European Commission - Joint Research Centre (JRC), the African Union Commission - Agriculture, Rural Development, Blue Economy, and Sustainable Environment (ARBE), and the Forum for Agricultural Research in Africa (FARA).

PANAP offered support for the participation of African researchers at the annual GTAP Conference with the aim of encouraging applied, policy-relevant research relating to African agri-food system issues using modelling, particularly CGE modelling.



## Recipients



### Eyitemi Fasanu

Researcher, Covenant University (Nigeria)

### Energy Transition, Energy Policy and Macroeconomic Performance in Nigeria: A Computable General Equilibrium Approach (#7428)

Session #17, Pg. 41

Dr. Eyitemi Fasanu is an Energy Economist with nearly a decade of experience in economic policy research. She is the Founder of Research Ready Hub and an Economic Sustainability Analyst at KainosEdge Consulting. Passionate about the transformative power of research, she has equipped over 500 individuals with research capacity and provided research-driven solutions to over 100 organizations, including Boston Consulting Group and the Bill & Melinda Gates Foundation. As a specialist in Computable General Equilibrium (CGE) modeling, she has utilized STAND, PEP, and GTAP models to generate economic policy insights in energy, agriculture, and trade dynamics, shaping data-driven decisions for sustainable development. Popularly known as The Research Storyteller, she has spent over two years demystifying research through storytelling, helping hundreds overcome Research Trauma, develop Research Enthusiasm, build Research Confidence, and craft cutting-edge solutions.



### Mengistu Alamneh Wassie

Doctoral student, Bonn University (Germany)

### Trade Thrive in Ethiopia: Navigating Climate Change Impact- A Recursive Dynamic CGE Analysis (#7486)

Session #26, Pg. 54

Mengistu Alamneh Wassie is a Junior Researcher at the Center for Development Research (ZEF) and a final year Doctoral Candidate at the University of Bonn in Germany. His research focuses on development economics, trade policy, food security, and economic modeling. He is passionate about using computable general equilibrium (CGE) models and econometrics techniques to analyse trade dynamics, public investments, food security, and climate change policies.

## Young Scholars Initiative Funding Award

Through the Young Scholars Initiative (YSI), the Institute for New Economic Thinking (INET) provides support to the next generation of new economic thinkers. YSI provides a collaborative, open environment for young scholars to explore their interest in new economic thinking, and facilitates connections with the Institute's vast network of economists.



### Recipients



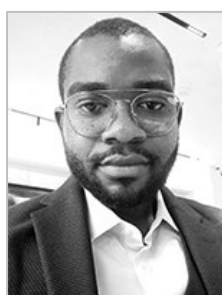
#### **Mussie Mindaye Hailesilassie**

Student, Messina University (Italy)

#### **The Impact of Geopolitical Polarization on Trade Policies in Africa: A BRICS Perspective (#7511)**

Session #14, Pg. 38

Mussie Mindaye Hailesilassie plays a pivotal role in the formulation of trade policy and strategy across national, regional, and multilateral domains. He engages in sector-specific research tailored to the private sector and has delivered presentations on market access and policy matters to trade-related associations. His prior position was as the Director General of Trade Relations and Negotiation at Ethiopia's Ministry of Trade and Regional Integration. In his ministry role, Mussie leads trade negotiations across multiple platforms, including multilateral, continental, regional, and bilateral levels. This includes WTO accession and agreements with AfCFTA, COMESA, IGAD, and various bilateral partners. He coordinates trade policy research, prepares negotiation documents, and participates in workshops and awareness programmes related to the WTO and AfCFTA. Furthermore, he supervises and supports department experts. Mussie chairs the National WTO and Regional Trade Negotiation Technical Committee of Ethiopia, which comprises 36 institutions such as ministries, commissions, agencies, the Ethiopian Chamber of Commerce, the Ethiopian Economic Association, and civil society. He also serves as an alternate negotiator for Ethiopia. He is a Ph.D. candidate in Economics at the University of Messina, Italy. He holds an M.A. in Economics with a concentration in Trade Policy and a B.A. in Economics, both from Addis Ababa University.



#### **Yvan Audrey Kamdem**

PhD Candidate, University of Yaounde 2 (Cameroon)

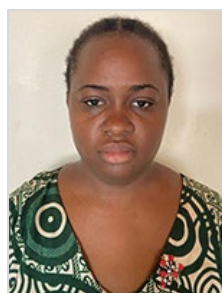
#### **Fintech, Credit Constraints and Educational Intergenerational Mobility: Evidence from Cameroon (#7462)**

Session #25, Pg. 50

Yvan Audrey Kamdem is an Independent Consultant and PhD Candidate at the University of Yaoundé 2, specializing in Applied Quantitative Techniques for Development Economics under the AERC program, with research focusing on FinTech, Financial Inclusion, and Intergenerational Mobility. With a Master's degree in Applied Economics and certifications in Impact Evaluation and Gender Studies, he has conducted research for organizations such as 3ie and the Cameroonian Red Cross, while also teaching Applied Quantitative and Qualitative Methods for Social Sciences. He co-founded the Kalar'r Initiative for Women in Economics (KIWE) and the digital magazine Diomzen, where he serves as Chief Editor, promoting youth ambition and social entrepreneurship in Africa. His work has been presented at international conferences and published in academic book chapters.

**Young Scholars Initiative Funding Award (cont.)**

Through the Young Scholars Initiative (YSI), the Institute for New Economic Thinking (INET) provides support to the next generation of new economic thinkers. YSI provides a collaborative, open environment for young scholars to explore their interest in new economic thinking, and facilitates connections with the Institute's vast network of economists.

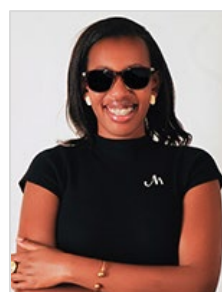
**Recipients****Josiane Ngamgo**

PhD Student, University of Yaounde 2 (Cameroon)

**Do ICTs Reduce Informal Economy? Evidence From Some Developing Countries (#7480)**

Session #25, Pg. 50

Josiane Ngamgo holds a Masters in Economics and Financial Engineering, a collaborative diploma between the University of Yaounde 2 (Cameroon) and The University of Rennes 1 (France). As PhD student, she is interested in issues related to gender, climate change, creative industry, unemployment and informal economy.

**Consolee Tuyishimire**

Business Advisor, Rwanda Institute of Cooperatives, Entrepreneurship and Microfinance (Rwanda)

Consolee Tuyishimire is a business development professional with a focus on strengthening Cooperatives and SMEs through capacity building, stakeholder engagement, and impactful project implementation. She works closely with government agencies and international partners to implement projects that drive sector-wide transformation.

## GTAP Conference Scholars Program

The goal of the GTAP Conference Scholars Program is to provide first-time student presenters the opportunity to dry-run their presentation in a virtual environment prior to the conference, receive feedback, and have time to reflect on, and incorporate changes before their conference presentation.

### Participants

**Sara Ashour**

Ph.D. Student in Agriculture Economics, Universitat Humboldt Zu Berlin (Egypt)

**Trade Facilitation and Food Security in Jordan: Addressing Non-Tariff Barriers Amid Regional Crises** (#7242)

Session #3, Pg. 22

Sara Ashour is a doctoral researcher at the International Agricultural Trade and Development Group at Humboldt-Universität zu Berlin with a focus on agricultural trade policies, food security and climate mitigation efforts in the Jordan river Basin. She is a former trade negotiator at the Egyptian Ministry of Trade and Industry with more than thirteen years of experience in trade agreements, rules of origin, trade facilitation, and development issues such as children's rights, health rights, and gender issues. She holds an M.A in Development and Governance from University Duisburg Essen in Germany and a B.A. in Political Science from Cairo University.

**Joel Christoph**

PhD Student, European University Institute (Italy)

**Integrating Advanced CGE Modeling and AI-Based Scenario Analysis for Climate Policy** (#7560)

Session #32, Pg. 60

Joel Christoph is a PhD candidate in Economics at the European University Institute. His research employs quantitative modeling to address global challenges in trade, climate policy, and sustainable development. Recognized with awards and having provided consultancy for international organizations, he is committed to developing innovative policy solutions that foster a more resilient and inclusive global economy.

**Koko A Bidias Rigoberte Carine**

Student, University of Yaounde II - Soa (Cameroon)

**Effect of women entrepreneurship and ICT on bilateral trade in Africa: Evidence from a panel study using the extended gravity model** (#7491)

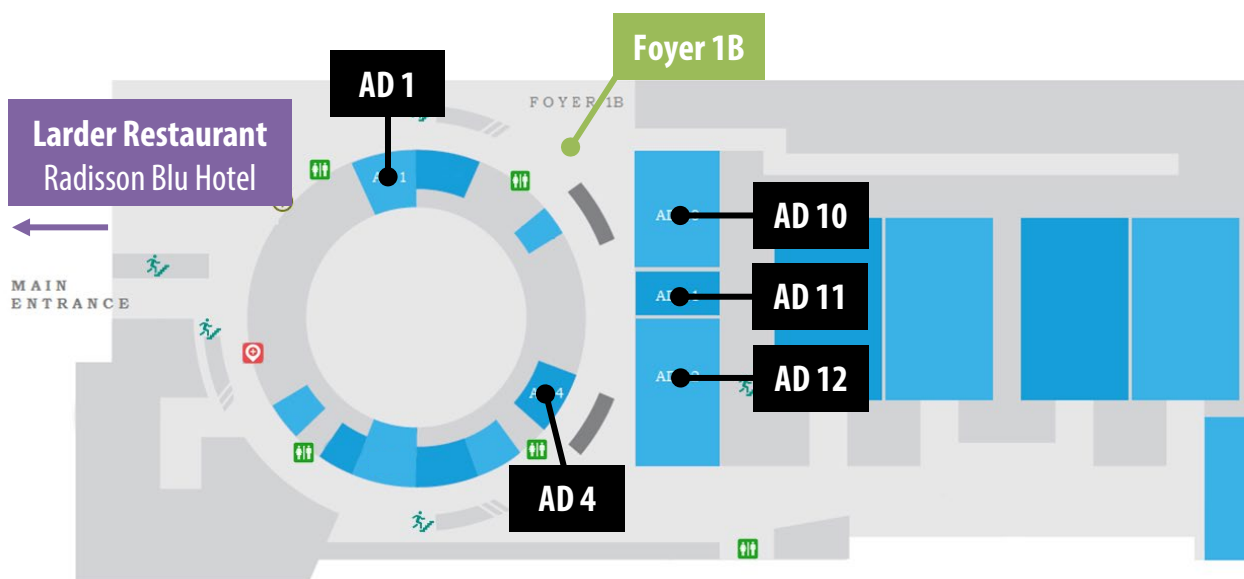
Organized Session #27, Pg. 55

Koko A Bidias Rigoberte Carine holds a master's degree in information systems from the University of Yaoundé 2 Soa and is currently enrolled in a doctoral thesis at the aforementioned university.



## CONFERENCE VENUE FLOORPLAN

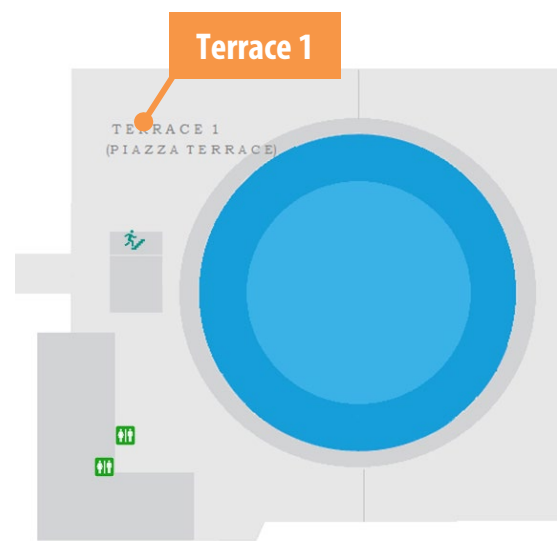
- Session Rooms** (Ground Floor - AD 1, 4, 10, 11, 12)
- Coffee Breaks** (Ground Floor – Foyer 1B)
- Lunches** (First Floor - Auditorium Club Restaurant)
- Reception and Awards Ceremony** (Second Floor – Terrace 1)
- Dinner** (Radisson Blu Hotel - Larder Restaurant)



**Ground Floor**



**First Floor**



**Second Floor**

**TUESDAY, JUNE 24**

**Schedule**

<b>Time</b> (CAT, UTC+2)	<b>Event</b>	<b>Location</b>
<b>3:00-5:00pm</b> (15:00-17:00)	<b>Early Onsite Check-in</b>	<b>Outside AD 12</b>

We encourage participants who will be in Kigali on Tuesday afternoon to attend this early check-in to collect their conference materials and avoid the line Wednesday morning.

**Radisson Blu Hotel & Convention Centre**

KG 2 Roundabout

Kigali, Rwanda

WEDNESDAY, JUNE 25

Distinguished Plenary Speaker

## ***Changing Global Dynamics, Multilateralism and Africa's Growth and Development***



### **Dr. Akinwumi Ayodeji Adesina**

President and Chairman Boards of Directors  
African Development Bank Group

Dr. Akinwumi A. Adesina is the 8th elected President of the African Development Bank Group. He was first elected to the position on May 28, 2015, by the Bank's Board of Governors at its Annual Meetings held in Abidjan, Côte d'Ivoire, and historically unanimously re-elected in 2020.

Dr. Adesina is a globally renowned development economist and agricultural development expert, with more than 30 years of international experience. He graduated with a bachelor's degree in Agricultural Economics (First Class Honors) from the University of Ife (now Obafemi Awolowo University), Nigeria, in 1981. He was the first student to obtain a First-Class Honors in Agricultural Economics in the history of the university.

He holds a master's degree (1985) and a PhD in Agricultural Economics (1988) from Purdue University, USA, where he won the Outstanding PhD thesis award for that year. Dr. Adesina won the prestigious Rockefeller Foundation Social Science Fellowship in 1988, which launched him into his international career.

A bold reformer, as the Minister of Agriculture in Nigeria from 2011-2015, Dr. Adesina turned Nigeria's agriculture sector around within four years. Under his tenure, Nigeria ended 40 years of corruption in the fertilizer sector by developing and implementing an innovative electronic wallet system, which directly provided 15 million farmers with subsidized farm inputs at scale using their mobile phones. The initiative effectively ended fertilizer corruption and transformed the lives of farmers and communities.

A firm believer in private sector-led growth, Dr. Adesina radically changed the perception of agriculture in Nigeria from that of subsistence to a viable business that successfully attracted \$5.6 billion in private sector investment. He also led financing initiatives to support youth engagement in agriculture and Small and Medium Enterprises (SMEs). Ultimately, under his leadership, Nigeria's food production expanded by an historic additional 21 million metric tons.

Prior to his appointment as Minister of Agriculture, Dr. Adesina was the Vice President for Policy and Partnerships with the Alliance for a Green Revolution in Africa (AGRA), where he led several bold and innovative policy and finance initiatives that leveraged over \$4 billion in Bank finance commitments to Africa's agriculture sector. Working with African Heads of State and Ministers of Finance, leaders in the commercial banking industry and Central Bank Governors across several African countries, Dr. Adesina successfully led one of the largest global efforts to leverage domestic bank finance for the agricultural sector.

Before joining AGRA in 2008, he had served as Associate Director and Regional Director for the Southern Africa Office of the Rockefeller Foundation for over a decade. Dr. Adesina was Principal Economist for the West Africa Rice Development Association (1990-1995), Senior Economist and Social Science Coordinator for the International Institute for Tropical Agriculture (1995-1998) and Assistant Principal Economist of the International Crops Research Institute for the Semi-Arid Tropics (1988-1990).

A prolific writer, Dr. Adesina has authored over 70 scholarly publications on policy, agricultural development, and African development issues. He is a globally respected economist and has served as the President of the African Association of Agricultural Economists, as well as on the Editorial Board of several academic journals, including the International Journal of Agricultural Economists. He was awarded the Outstanding Black Agricultural Economist Award by the American Association of Agricultural Economists. He was a Distinguished Africanist Scholar at Cornell University, USA.

As President of the African Development Bank, he launched in 2015 a bold strategy to transform the lives of Africans called the High 5s: *to Light Up and Power Africa; Feed Africa; Integrate Africa; Industrialize Africa; and Improve the quality of life of the people of Africa*. The High 5s have already impacted the lives of more than half a billion Africans.

To attract alternative and increased investments into Africa, Dr. Adesina launched the Africa Investment Forum (AIF) in 2018, the first event of its kind, to attract global capital to accelerate Africa's economic development. The unique investment forum, which has several African and global financial institutional partners, has become the premier investment marketplace for Africa, attracting over \$225 billion worth of investment interest to Africa.

Dr. Adesina has received several distinctions and global awards, including the YARA Prize (2007) in Oslo, Norway, for his leadership in pioneering innovative approaches to improve access to agricultural inputs for African farmers; Distinguished Alumni Award from Purdue University, USA, in 2008; Distinguished Alumni Award in 2009 and the Grand Commander of Great Ife in 2013, both from the Obafemi Awolowo University, Nigeria; and Borlaug CAST Communications Award in 2010 by the Council for Agricultural Science and Technology, USA, for his global leadership in agricultural science and technology.

He has received several honorary doctoral awards globally, including Franklin and Marshall College, USA; Purdue University, USA; Michigan State University, USA; Duke University, USA; and the University of Alberta Canada. In Africa, he has received honorary doctorates by major universities, including Makerere University, Uganda; Ethiopia's Addis Ababa University; The American University of Nigeria; Obafemi Awolowo University, Nigeria; Adekunle Ajasin University, Nigeria; Afe Babalola University Nigeria; Federal University of Technology, Akure, Nigeria; Bowen University Nigeria; Veritas University, Nigeria; Bayero University, Nigeria; and the Nigerian Defense Academy.

In October 2017, his alma mater, Purdue University, USA, decorated him with its highest honor, the **Order of the Griffin**, a rare honor given only to 50 persons since 1893, including to Neil Armstrong, the first man to walk on the moon.

In 2010, Dr. Adesina was appointed by the United Nations Secretary General, Ban Ki-moon, as one of 17 world leaders to galvanize international support for the United Nations Millennium Development Goals.

In 2019, the United Nations Secretary General António Guterres appointed Dr. Adesina as one of the 23 global leaders to help end hunger and malnutrition. He serves globally as one of the Commissioners for the Global Climate Commission, co-Chaired by Bill Gates, and former United Nations Secretary General Ban Ki-Moon, to tackle global climate change. Dr. Adesina also serves on the Global Panel on Agriculture and Food Systems for Nutrition.

Dr. Adesina has won several international awards including the Forbes Africa Person of the Year for his bold reforms in Nigeria's agriculture sector; Nigeria's Leadership Newspaper's 2013 Public Servant of the Year, for his bold policy reforms, transparency, and public accountability; and the Extra-Ordinary Achievement Award by Silverbird Television, Nigeria, for his achievements as Nigeria's Minister of Agriculture.

Also, the West African Institute of Public Health, recognized Dr. Adesina with its 2020 Distinguished Fellowship Award, for his innovative and successful efforts to curb the impact of the coronavirus pandemic in Africa.

At a national level, Dr. Adesina has been conferred with Nigeria's second-highest national honor, the Commander of the Order of the Niger, for his outstanding service to his country, Nigeria.

In recognition of his outstanding leadership, passion, and dedication for accelerating African development, he has also been awarded the highest national honors of nine African countries: Senegal, Cameroon, Madagascar, Togo, Liberia, Niger, The Gambia, Djibouti and Tunisia respectively.

In 2017, the World Food Prize Foundation awarded Dr. Adesina the **World Food Prize**, generally known as the "Nobel Prize for Agriculture". Dr. Adesina devoted the \$250,000 Laureate award to the establishment of the World Hunger Fighters Foundation, to support Africa's youth in agriculture and to develop a new generation of world hunger fighters. And Bill Gates listed Dr. Adesina's award of the World Food Prize and his gesture to use it to support the youth in Africa as one of the seven most encouraging moments of 2017.

In 2017, Dr. Adesina was ranked in the top 15 of the 100 most influential global leaders in multilateral development organizations.

In 2019, Dr. Adesina was awarded several distinguished awards including the prestigious **Sunhak Peace Prize** in Seoul, South Korea, for his global leadership on agriculture, food security, transparency, and good governance. He dedicated his \$500,000 award to the World Hunger Fighters Foundation that he established to fight global hunger.

He was awarded the Emeka Anyaoku Lifetime Achievement Award of Outstanding International Icon by the Hallmarks of Labor Foundation, during which Chief Anyaoku, former Commonwealth Secretary General said, *"Dr. Adesina's work, and leadership are legendary, unprecedented and worthy of emulation."*

In 2019, Dr. Adesina led the African Development Bank to achieve its highest capital increase since the Bank's establishment in 1964, when shareholders raised the general capital of the Bank from \$93 billion to \$208 billion – a historic achievement for Africa.

In 2020, Dr. Adesina was re-elected to a second term as President of the African Development Bank Group with 100% of the votes of all 81 African and Non-African shareholder countries, the first such achievement in the history of the African Development Bank, a demonstration of global confidence in his outstanding leadership of the African Development Bank.

In 2023, Dr. Adesina and the President of Senegal convened the Feed Africa Summit, which attracted 34 African Heads of State, the President of Ireland and hundreds of ministers from within and outside Africa and successfully mobilized \$72 billion for tackling food security in Africa – the largest ever globally coordinated effort in Africa's history.

In 2023, Dr. Adesina was named among the 100 Most Influential Africans by the New Africa Magazine.

In 2024 Dr. Adesina was awarded the prestigious Obafemi Awolowo Prize for Leadership which recognized him as “a Pan Africanist with enthusiastic commitment to the positive transformation of the continent, he has demonstrated core leadership qualities that have been associated with Chief Obafemi Awolowo, and which this Prize is meant to encourage and reward. Dr. Adesina is a person whose outstanding leadership has occasioned public policies that have positively transformed millions of lives.”

In 2024, Dr. Adesina and the President of the World Bank Group Ajay Banga launched an historic partnership that led to the creation of Mission300, an ambitious multibillion dollar initiative to connect 300 million people in Africa to electricity by 2030.

Dr. Adesina has transformed the African Development Bank Group into an award-winning global brand that is a leader in financial innovation. For the second time, the African Development Bank Group has been ranked in the 2024 Aid Transparency Index as the most transparent development organization in the world and recorded the highest score ever by any development organization.

Under Dr. Adesina's leadership, the Bank Group's general capital has significantly grown from \$93 billion when he took over in 2015 to \$318 billion following approval by the Board of Governors during the Bank Group's Annual Meetings in Nairobi in May 2025. The quantum financial increase reflects strong confidence in the leadership and management of Africa's only AAA rated financial institution.

As part of other strategic initiatives to reform the global financial architecture, the African Development Bank teamed up with the Inter-American Development Bank, and developed an innovative proposal, approved in 2024 by the International Monetary Fund, to channel Special Drawing Rights (SDRs) through multilateral development banks.

The initiative could unlock new lending by the African Development Bank at even greater scale multiplying an allocation of \$20 billion in Special Drawing Rights channeled through the Bank into \$80 billion in new financial support.

Additionally, in 2024, the African Development Bank issued an oversubscribed \$750 million hybrid capital note on the global capital market, the first instrument of its kind by a multilateral development bank which received global acknowledgement from the recent G7 Leaders' Summit.

In 2024 he was named as the inaugural African-of-the-Decade Award by the All-Africa Business Leaders Awards (AABLA™). His citation noted: “Dr. Adesina has demonstrated a significant impact on the African continent through innovative solutions, projects, or initiatives that address the continent's pressing socio-economic and environmental challenges. He has consistently shown leadership, vision, and dedication, driving positive change in sustainable development in Africa,”

In March 2025 he was conferred with the Republic of Kenya's highest medal, the Chief of the Order of the Golden Heart by President William Ruto.

In April 2025 he was conferred an Honorary Doctorate Degree, Doctor of Humane Letters (L.H.D.) (Honoris Causa) by the National Open University of Nigeria (NOUN)

In May 2025 he was awarded the Professional Merit Medal of the First Degree by the Government of Cabo Verde.

The leading reputation management firm, Reputation Poll International, has listed Dr. Adesina among the 100 most reputable people in the world.

Dr. Adesina celebrated his 65<sup>th</sup> birthday on 6 February 2025.



## WEDNESDAY, JUNE 25

## Schedule Overview

Session details for this day are listed on pages 19-35. You can also access the conference schedule through the Whova mobile app (see page 3).

Time (CAT, UTC+2)	Event	Location
9:00-10:05am	<b>Opening Remarks and Plenary Session</b> - Pg. 19 <i>Changing Global Dynamics, Multilateralism and Africa's Growth and Development</i>	AD 12
10:05-10:35am	<b>Coffee Break</b>	Foyer 1B
10:35am-12:20pm	<b>Organized Session #1</b> - Pg. 20 <i>Promoting Global Sustainability through Trade: The Impact of EU Mirror Clauses and Demand-side Measures</i>	AD 12
	<b>Organized Session #2</b> - Pg. 21 <i>Incorporating natural capital into World Bank general equilibrium models</i>	AD 1
	<b>Session #3</b> - Pg. 22 <i>Non-Tariff Measures and Barriers</i>	AD 4
	<b>Organized Session #4</b> - Pg. 23 <i>Implications of domestic and global climate policies on African countries in the context of trade and economic development</i>	AD 10
12:20-2:00pm (12:20-14:00)	<b>Lunch</b> (Don't forget the daily lunch voucher provided with your conference materials!)	Auditorium Club
2:00-3:45pm (14:00-15:45)	<b>Organized Session #5</b> - Pg. 25 <i>Improving Food Security In Eastern Africa through Greater Intra-Regional Trade – A Review of the Issues</i>	AD 12
	<b>Session #6</b> - Pg. 26 <i>Renewable Energy</i>	AD 1
	<b>Session #7</b> - Pg. 27 <i>Socio-economic Factors and Impacts: Sudan and Morocco</i>	AD 4
	<b>Session #8</b> - Pg. 28 <i>Climate Impacts</i>	AD 10
3:45-4:15pm (15:45-16:15)	<b>Coffee Break</b>	Foyer 1B
4:15-6:00pm (16:15-18:00)	<b>Organized Session #9</b> - Pg. 30 <i>Advancing global data and models for climate policy analysis</i>	AD 12
	<b>Session #10</b> - Pg. 31 <i>Labor Market Issues</i>	AD 1
	<b>Session #11</b> - Pg. 32 <i>Land Use and Climate Policies</i>	AD 4
	<b>Organized Session #12</b> - Pg. 33 <i>Value chains, economic diversification and food security in Africa</i>	AD 10
	<b>Session #13</b> - Pg. 34 <i>Industrialization</i>	AD 11
6:00-8:30pm (18:00-20:30)	<b>Reception and Awards Ceremony</b>	Terrace 1

**WEDNESDAY, JUNE 25****Detailed Schedule**

Presenters should arrive to their assigned session room 10 minutes prior to the start of the session with their presentation on a USB drive in both PowerPoint and PDF formats. Times listed within each session are targets and may vary slightly.

**Looking for a paper?**

Search by ID# at: <http://www.gtap.org/events/conferences/2025/>

Time (CAT, UTC+2)	Event	Location
<b>8:00am-5:00pm</b> (08:00-17:00)	<b>Onsite Check-in</b>	<b>Outside AD 12</b>

<b>9:00-10:05am</b>	<b>Opening Remarks and Plenary Session</b>	<b>AD 12</b>
---------------------	--	--------------

## ***Changing Global Dynamics, Multilateralism and Africa's Growth and Development***

**Session Chair:** Fousseini Traore, International Food Policy Research Institute

<b>9:00-9:20am</b>	<b>Opening Remarks</b> <ul style="list-style-type: none"> <li>— <b>Channing Arndt</b>, Center for Global Trade Analysis, Department of Agricultural Economics, Purdue University</li> <li>— <b>Stephen Karingi</b>, United Nations Economic Commission for Africa</li> <li>— <b>Honorable Minister Prudence Sebahizi</b>, Ministry of Trade and Industry (Rwanda)</li> </ul>
<b>9:20-9:23am</b>	<b>Session Introduction</b>
<b>9:23-9:43am</b>	<b>Changing Global Dynamics, Multilateralism and Africa's Growth and Development</b> <ul style="list-style-type: none"> <li>— <b>Akinwumi A. Adesina</b>, African Development Bank Group</li> </ul>
<b>9:43-10:03am</b>	<b>Discussion</b>
<b>10:03-10:05am</b>	<b>Session Closing</b>

<b>10:05-10:35am</b>	<b>Coffee Break</b>	<b>Foyer 1B</b>
----------------------	---------------------	-----------------

**WEDNESDAY, JUNE 25****Detailed Schedule**

Presenters should arrive to their assigned session room 10 minutes prior to the start of the session with their presentation on a USB drive in both PowerPoint and PDF formats. Times listed within each session are targets and may vary slightly.

**Looking for a paper?**

Search by ID# at: <http://www.gtap.org/events/conferences/2025/>

Time (CAT, UTC+2)	Event	Location
10:35am-12:20pm	Organized Session #1	AD 12

## ***Promoting Global Sustainability through Trade: The Impact of EU Mirror Clauses and Demand-side Measures***

**Organized by:** **Ole Boysen**, European Commission, Joint Research Centre (JRC)  
**Emanuele Ferrari**, European Commission - Joint Research Centre

**Session Chair:** **Ole Boysen**, European Commission, Joint Research Centre (JRC)

10:35-10:38am	Session Introduction
10:38-10:53am	<b><u>The Environmental and Economic Impacts of EU Trade Agreements and Unilateral EU Regulations</u></b> (#7536) — <b>Alessandro Antimiani</b> , European Commission, DG TRADE
10:53-11:03am	Discussion
11:03-11:18am	<b><u>CBAM, Abatement Technology Adoption, and Trade Agreement: The Case of EU-Mercosur Partnership Agreement</u></b> (#7539) — <b>Wusheng Yu</b> , Department of Food and Resource Economics, Faculty of Science, University of Copenhagen
11:18-11:28am	Discussion
11:28-11:43am	<b><u>Carbon Border Adjustment Mechanism (CBAM) Explorer</u></b> (#7566) — <b>Maryla Maliszewska</b> , The World Bank
11:43-11:53am	Discussion
11:53am-12:08pm	<b><u>The EU Deforestation Regulation for Cocoa: Impacts on Ghana's Economy and Deforestation</u></b> (#7554) — <b>Ole Boysen</b> , European Commission, Joint Research Centre (JRC)
12:08-12:18pm	Discussion
12:18-12:20pm	Session Closing

WEDNESDAY, JUNE 25

## Detailed Schedule

Presenters should arrive to their assigned session room 10 minutes prior to the start of the session with their presentation on a USB drive in both PowerPoint and PDF formats. Times listed within each session are targets and may vary slightly.

**Looking for a paper?**

Search by ID# at: <http://www.gtap.org/events/conferences/2025/>

Time (CAT, UTC+2)	Event	Location
10:35am-12:20pm	Organized Session #2	AD 1

### ***Incorporating natural capital into World Bank general equilibrium models***

**Organized by:** Tijen Arin, The World Bank  
Ragchaasuren Galindev, World Bank

**Session Chair:** Djiofack Zebaze Calvin, World Bank

10:35-10:38am	Session Introduction
10:38-10:53am	<u>Mainstreaming Ecosystem Services in the World Bank's MANAGE-WB Model</u> (#7469) — Ragchaasuren Galindev, World Bank
10:53-11:03am	Discussion
11:03-11:18am	<u>A consistent methodology to incorporate mangrove ecosystem services into World Bank country-specific macroeconomic models</u> (#7494) — Tijen Arin, The World Bank
11:18-11:28am	Discussion
11:28am-12:18pm	Discussant — Mathias Karangwa, National Bank of Rwanda
12:18-12:20pm	Session Closing

**WEDNESDAY, JUNE 25****Detailed Schedule**

Presenters should arrive to their assigned session room 10 minutes prior to the start of the session with their presentation on a USB drive in both PowerPoint and PDF formats. Times listed within each session are targets and may vary slightly.

**Looking for a paper?**

Search by ID# at: <http://www.gtap.org/events/conferences/2025/>

Time (CAT, UTC+2)	Event	Location
10:35am-12:20pm	Session #3	AD 4

***Non-Tariff Measures and Barriers***

**Session Chair:** Erwin Corong, Center for Global Trade Analysis, Department of Agricultural Economics, Purdue University

10:35-10:38am Session Introduction

10:38-10:53am **Geography, Transport and the Composition of Trade** (#7544)  
— Russell Hillberry, Department of Agricultural Economics, Purdue University

10:53-11:03am Discussion

11:03-11:18am **Non-Tariff Measures and Ad-Valorem Equivalent estimates using WTO Notifications and UNCTAD TRAINS data** (#7507)  
— Amanda M. Countryman, Colorado State University

11:18-11:28am Discussion

11:28-11:43am **Quantifying Non-Tariff Measures of ASEAN Countries Using GTAP CGE Model: Updated Analysis with Proposed U.S. Tariff Rates** (#7524)  
— Pattawee Puangchit, Center for Global Trade Analysis, Department of Agricultural Economics, Purdue University

11:43-11:53am Discussion

11:53am-12:08pm **Trade Facilitation and Food Security in Jordan: Addressing Non-Tariff Barriers Amid Regional Crises** (#7552)  
— Sara Ashour, Universitat Humboldt Zu Berlin  
\*GTAP Conference Scholars Program Participant

12:08-12:18pm Discussion

12:18-12:20pm Session Closing



WEDNESDAY, JUNE 25

## Detailed Schedule

Presenters should arrive to their assigned session room 10 minutes prior to the start of the session with their presentation on a USB drive in both PowerPoint and PDF formats. Times listed within each session are targets and may vary slightly.

**Looking for a paper?**

Search by ID# at: <http://www.gtap.org/events/conferences/2025/>

Time (CAT, UTC+2)	Event	Location
10:35-11:55am	Organized Session #4	AD 10

### ***Implications of domestic and global climate policies on African countries in the context of trade and economic development***

**Organized by:** Maksym Chepeliev, Center for Global Trade Analysis, Department of Agricultural Economics, Purdue University

**Session Chair:** Maksym Chepeliev, Center for Global Trade Analysis, Department of Agricultural Economics, Purdue University

10:35-10:38am	Session Introduction
10:38-10:53am	<b><u>Harnessing Renewables in Sub-Saharan Africa: Barriers, Reforms, and Economic Prospects</u></b> (#7412) — Sneha Thube, International Monetary Fund
10:53-11:03am	Discussion
11:03-11:18am	<b><u>Trade Liberalization and Carbon Taxes: A Study of Impact of AfCFTA and CBAM on African Economies</u></b> (#7518) — Badri Narayanan, Infinite Sum Modelling, LLC
11:18-11:28am	Discussion
11:28-11:43am	<b><u>Nigeria's diversification with climate mitigation outcomes – CGE applied to policy analysis</u></b> (#7565) — Grzegorz Peszko, KAPSARC
11:43-11:53am	Discussion
11:53-11:55am	Session Closing

## WEDNESDAY, JUNE 25

## Detailed Schedule

Presenters should arrive to their assigned session room 10 minutes prior to the start of the session with their presentation on a USB drive in both PowerPoint and PDF formats. Times listed within each session are targets and may vary slightly.

**Looking for a paper?**

Search by ID# at: <http://www.gtap.org/events/conferences/2025/>

Time (CAT, UTC+2)	Event	Location
12:20-2:00pm (12:20-14:00)	Lunch	Auditorium Club

The Auditorium Club Restaurant is located on the first floor, immediately above the Filini Restaurant. Guests can use the stairs by the entrance or the ground floor ramp that leads to the Auditorium and cross a bridge to reach the restaurant.

**IMPORTANT**

Attendees must present a lunch voucher to the Auditorium Club Restaurant staff. Lunch vouchers for each day were provided to registrants upon onsite check-in, along with their conference materials.

**Extra vouchers are not available.** Attendees are responsible for bringing their lunch vouchers each day.

WEDNESDAY, JUNE 25

## Detailed Schedule

Presenters should arrive to their assigned session room 10 minutes prior to the start of the session with their presentation on a USB drive in both PowerPoint and PDF formats. Times listed within each session are targets and may vary slightly.

**Looking for a paper?**

Search by ID# at: <http://www.gtap.org/events/conferences/2025/>

Time (CAT, UTC+2)	Event	Location
<b>2:00-3:45pm</b> (14:00-15:45)	<b>Organized Session #5</b>	<b>AD 12</b>

## ***Improving Food Security In Eastern Africa through Greater Intra-Regional Trade – A Review of the Issues***

**Organized by:** **Andrew Mold**, Regional Office for Eastern Africa, United Nations Economic Commission for Africa

**Session Chair:** **Andrew Mold**, Regional Office for Eastern Africa, United Nations Economic Commission for Africa

<b>2:00-2:03pm</b> (14:00-14:03)	<b>Session Introduction</b>
<b>2:03-2:18pm</b> (14:03-14:18)	<b><u>Effects of Climate Change on Crop Revenue in Kenya: Implications on Agricultural Production</u></b> (#7454) — <b>Joshua Laichena</b> , Kenya Institute for Public Policy Research and Analysis
<b>2:18-2:28pm</b> (14:18-14:28)	<b>Discussion</b>
<b>2:28-2:43pm</b> (14:28-14:43)	<b><u>Systematic Risk Profiling: A Novel Approach with Applications to Kenya, Rwanda, and Malawi</u></b> (#7495) — <b>Askar Mukashov</b> , IFPRI
<b>2:43-2:53pm</b> (14:43-14:53)	<b>Discussion</b>
<b>2:53-3:08pm</b> (14:53-15:08)	<b><u>Quantifying the trade-offs between biodiversity conservation and food security in Tanzania</u></b> (#7460) — <b>Abdelradi Mohammed</b> , University of Basel
<b>3:08-3:18pm</b> (15:08-15:18)	<b>Discussion</b>
<b>3:18-3:33pm</b> (15:18-15:33)	<b><u>Improving labour productivity in Kenya through food security and nutrition drivers: a food-related policy evaluation under CGE framework</u></b> (#7437) — <b>Emanuele Ferrari</b> , European Commission – Joint Research Centre
<b>3:33-3:43pm</b> (15:33-15:43)	<b>Discussion</b>
<b>3:43-3:45pm</b> (15:43-15:45)	<b>Session Closing</b>

**WEDNESDAY, JUNE 25****Detailed Schedule**

Presenters should arrive to their assigned session room 10 minutes prior to the start of the session with their presentation on a USB drive in both PowerPoint and PDF formats. Times listed within each session are targets and may vary slightly.

**Looking for a paper?**

Search by ID# at: <http://www.gtap.org/events/conferences/2025/>

Time (CAT, UTC+2)	Event	Location
<b>2:00-3:45pm</b> (14:00-15:45)	<b>Session #6</b>	<b>AD 1</b>

**Renewable Energy**

**Session Chair:** Hugo Rojas-Romagosa, International Monetary Fund

<b>2:00-2:03pm</b> (14:00-14:03)	<b>Session Introduction</b>
<b>2:03-2:18pm</b> (14:03-14:18)	<b><u>Stable energy supply as a driver of industrial and agricultural development – an economy-wide analysis for Benin</u> (#7500)</b> — <b>Thierry Kinkpe</b> , Humboldt-University of Berlin
<b>2:18-2:28pm</b> (14:18-14:28)	<b>Discussion</b>
<b>2:28-2:43pm</b> (14:28-14:43)	<b><u>Connecting the Transition towards Renewable Energy with Wellbeing: A Computable General Equilibrium Analysis of Spain</u> (#7482)</b> — <b>Gianna Laura Angermayr</b> , University of Basel
<b>2:43-2:53pm</b> (14:43-14:53)	<b>Discussion</b>
<b>2:53-3:08pm</b> (14:53-15:08)	<b><u>Global Green Hydrogen Economy: Electricity Competition and Land-Use Change</u> (#7472)</b> — <b>Chun-Yu Chen</b> , University of Basel
<b>3:08-3:18pm</b> (15:08-15:18)	<b>Discussion</b>
<b>3:18-3:33pm</b> (15:18-15:33)	<b><u>Establishing a H2 Economy: The Case of Northern Germany</u> (#7417)</b> — <b>Stephen Sacht</b> , Hamburg Institute of International Economics
<b>3:33-3:43pm</b> (15:33-15:43)	<b>Discussion</b>
<b>3:43-3:45pm</b> (15:43-15:45)	<b>Session Closing</b>

WEDNESDAY, JUNE 25

## Detailed Schedule

Presenters should arrive to their assigned session room 10 minutes prior to the start of the session with their presentation on a USB drive in both PowerPoint and PDF formats. Times listed within each session are targets and may vary slightly.

**Looking for a paper?**

Search by ID# at: <http://www.gtap.org/events/conferences/2025/>

Time (CAT, UTC+2)	Event	Location
<b>2:00-3:45pm</b> (14:00-15:45)	<b>Session #7</b>	<b>AD 4</b>

***Socio-economic Factors and Impacts: Sudan and Morocco***

**Session Chair:** Souleymane Sadio Diallo, Centre Ivoirien de Recherches Economiques et Sociales - CIREs

<b>2:00-2:03pm</b> (14:00-14:03)	<b>Session Introduction</b>
<b>2:03-2:18pm</b> (14:03-14:18)	<b><u>Conflict and Recovery in Sudan: Socio-Economic Impacts and Resilience Pathways</u></b> (#7474) — Khalid Siddig, International Food Policy Research Institute
<b>2:18-2:28pm</b> (14:18-14:28)	<b>Discussion</b>
<b>2:28-2:43pm</b> (14:28-14:43)	<b><u>Public Spending on social protection and their impacts on economic growth in Morocco: A SAM multiplier and CGE Model Analysis</u></b> (#7436) — Nabil El Baouchari, Mohammed V University in Rabat
<b>2:43-2:53pm</b> (14:43-14:53)	<b>Discussion</b>
<b>2:53-3:08pm</b> (14:53-15:08)	<b><u>Public Capital Efficiency and Regional Growth Dynamics in Morocco: An Analysis Using a Hybrid Approach Combining Stochastic Frontier and Dynamic Regional CGE Model.</u></b> (#7467) — Ayoub Kharbouche, Mohammed V University in Rabat
<b>3:08-3:18pm</b> (15:08-15:18)	<b>Discussion</b>
<b>3:18-3:33pm</b> (15:18-15:33)	<b><u>The Impact of Liberalisation on Women's Economic Participation and the Incidence of Gender Equality on Morocco's Economy: A Gender-Sensitive CGE Model Analysis.</u></b> (#7499) — Yassine El Hajoui, Mohammed V University in Rabat
<b>3:33-3:43pm</b> (15:33-15:43)	<b>Discussion</b>
<b>3:43-3:45pm</b> (15:43-15:45)	<b>Session Closing</b>



**WEDNESDAY, JUNE 25****Detailed Schedule**

Presenters should arrive to their assigned session room 10 minutes prior to the start of the session with their presentation on a USB drive in both PowerPoint and PDF formats. Times listed within each session are targets and may vary slightly.

**Looking for a paper?**

Search by ID# at: <http://www.gtap.org/events/conferences/2025/>

Time (CAT, UTC+2)	Event	Location
<b>2:00-3:45pm</b> (14:00-15:45)	<b>Session #8</b>	<b>AD 10</b>

***Climate Impacts***

**Session Chair:** Zuhail Elnour, Humboldt-Universität zu Berlin

<b>2:00-2:03pm</b> (14:00-14:03)	<b>Session Introduction</b>
<b>2:03-2:18pm</b> (14:03-14:18)	<b><u>How Do Foreign Climate Disasters Impact Bilateral Trade? Evidence from Sectoral Data</u></b> (#7473) — Arouna Zorome, Clermont Auvergne University
<b>2:18-2:28pm</b> (14:18-14:28)	<b>Discussion</b>
<b>2:28-2:43pm</b> (14:28-14:43)	<b><u>Assessing impacts of climate change on agricultural markets taking inter-annual yield variability in global crop yield projections into account</u></b> (#7523) — Ruth Delzeit, University of Basel
<b>2:43-2:53pm</b> (14:43-14:53)	<b>Discussion</b>
<b>2:53-3:08pm</b> (14:53-15:08)	<b><u>Climate Change Induced-Heat Stress and Labour Reallocation in Burkina Faso: A CGE Analysis</u></b> (#7493) — Martial Houessou, Humboldt University of Berlin
<b>3:08-3:18pm</b> (15:08-15:18)	<b>Discussion</b>
<b>3:18-3:33pm</b> (15:18-15:33)	<b><u>Production- and Consumption-Based Emissions: An International Comparison</u></b> (#7581) — Cagacan Deger, Economic and Social Research Institute
<b>3:33-3:43pm</b> (15:33-15:43)	<b>Discussion</b>
<b>3:43-3:45pm</b> (15:43-15:45)	<b>Session Closing</b>

## WEDNESDAY, JUNE 25

## Detailed Schedule

Presenters should arrive to their assigned session room 10 minutes prior to the start of the session with their presentation on a USB drive in both PowerPoint and PDF formats. Times listed within each session are targets and may vary slightly.

***Looking for a paper?***

Search by ID# at: <http://www.gtap.org/events/conferences/2025/>

Time (CAT, UTC+2)	Event	Location
3:45-4:15pm (15:45-16:15)	Coffee Break	Foyer 1B

WEDNESDAY, JUNE 25

## Detailed Schedule

Presenters should arrive to their assigned session room 10 minutes prior to the start of the session with their presentation on a USB drive in both PowerPoint and PDF formats. Times listed within each session are targets and may vary slightly.

**Looking for a paper?**

Search by ID# at: <http://www.gtap.org/events/conferences/2025/>

Time (CAT, UTC+2)	Event	Location
<b>4:15-6:00pm</b> (16:15-18:00)	<b>Organized Session #9</b>	<b>AD 12</b>

***Advancing global data and models for climate policy analysis***

**Organized by:** Maksym Chepeliev, Center for Global Trade Analysis, Department of Agricultural Economics, Purdue University

**Session Chair:** Maksym Chepeliev, Center for Global Trade Analysis, Department of Agricultural Economics, Purdue University

<b>4:15-4:18pm</b> (16:15-16:18)	<b>Session Introduction</b>
<b>4:18-4:33pm</b> (16:18-16:33)	<b><u>Advancing the representation of critical minerals supply chains in the global economic models</u> (#7561)</b> — Maksym Chepeliev, Center for Global Trade Analysis, Department of Agricultural Economics, Purdue University
<b>4:33-4:43pm</b> (16:33-16:43)	<b>Discussion</b>
<b>4:43-4:58pm</b> (16:43-16:58)	<b><u>Impacts of Global Greenhouse Gas Mitigation on Heterogeneous Livestock Sectors</u> (#7522)</b> — Alla Golub, Center for Global Trade Analysis, Department of Agricultural Economics, Purdue University
<b>4:58-5:08pm</b> (16:58-17:08)	<b>Discussion</b>
<b>5:08-5:23pm</b> (17:08-17:23)	<b><u>Analysing the potential of secondary aluminium in achieving decarbonisation of the global aluminium industry</u> (#7498)</b> — Zijie Ma, University College London
<b>5:23-5:33pm</b> (17:23-17:33)	<b>Discussion</b>
<b>5:33-5:48pm</b> (17:33-17:48)	<b><u>Triple Planetary Crisis of climate change, biodiversity loss and pollution: Baseline analysis toward 2050</u> (#7506)</b> — Hidemichi Yonezawa, OECD
<b>5:48-5:58pm</b> (17:48-17:58)	<b>Discussion</b>
<b>5:58-6:00pm</b> (17:58-18:00)	<b>Session Closing</b>

**WEDNESDAY, JUNE 25****Detailed Schedule**

Presenters should arrive to their assigned session room 10 minutes prior to the start of the session with their presentation on a USB drive in both PowerPoint and PDF formats. Times listed within each session are targets and may vary slightly.

**Looking for a paper?**

Search by ID# at: <http://www.gtap.org/events/conferences/2025/>

Time (CAT, UTC+2)	Event	Location
<b>4:15-6:00pm</b> (16:15-18:00)	<b>Session #10</b>	<b>AD 1</b>

***Labor Market Issues***

**Session Chair:** **Amanda M. Countryman**, Colorado State University

<b>4:15-4:18pm</b> (16:15-16:18)	<b>Session Introduction</b>
<b>4:18-4:33pm</b> (16:18-16:33)	<b><u>Effects of NAFTA on Rural U.S. Employment and Wages</u></b> (#7515) — <b>Diane Charlton</b> , Montana State University
<b>4:33-4:43pm</b> (16:33-16:43)	<b>Discussion</b>
<b>4:43-4:58pm</b> (16:43-16:58)	<b><u>The Impact of Indirect Taxes on Labor Income and Employment in Morocco: A dynamic CGE Modeling</u></b> (#7509) — <b>Fatiha Agueny</b> , University Mohamed V * Alex Meeraus / Thomas Rutherford Travel Funding Award Recipient
<b>4:58-5:08pm</b> (16:58-17:08)	<b>Discussion</b>
<b>5:08-5:23pm</b> (17:08-17:23)	<b><u>Assessing the Macroeconomic Impacts of Social Protection Investments in Morocco and Ivory Coast: A dynamic CGE Modeling</u></b> (#7439) — <b>Kouadio Aki Lela Wilfried</b> , University of Bouake
<b>5:23-5:33pm</b> (17:23-17:33)	<b>Discussion</b>
<b>5:33-5:48pm</b> (17:33-17:48)	<b><u>Trade liberalization and labour mobility in Africa: economic impacts and policy synergies</u></b> (#7447) — <b>Antti Simola</b> , European Commission - Joint Research Center
<b>5:48-5:58pm</b> (17:48-17:58)	<b>Discussion</b>
<b>5:58-6:00pm</b> (17:58-18:00)	<b>Session Closing</b>

WEDNESDAY, JUNE 25

## Detailed Schedule

Presenters should arrive to their assigned session room 10 minutes prior to the start of the session with their presentation on a USB drive in both PowerPoint and PDF formats. Times listed within each session are targets and may vary slightly.

**Looking for a paper?**

Search by ID# at: <http://www.gtap.org/events/conferences/2025/>

Time (CAT, UTC+2)	Event	Location
<b>4:15-6:00pm</b> (16:15-18:00)	<b>Session #11</b>	<b>AD 4</b>

***Land Use and Climate Policies***

**Session Chair:** Wusheng Yu, Department of Food and Resource Economics, Faculty of Science, University of Copenhagen

<b>4:15-4:18pm</b> (16:15-16:18)	<b>Session Introduction</b>
<b>4:18-4:33pm</b> (16:18-16:33)	<p><b><u>Detailed global land use and land cover projections under the Shared Socio-Economic Pathways: An integrated Computable General Equilibrium analysis with sub-national resolution for Europe</u> (#7538)</b></p> <p>— <b>Theresa Goebel</b>, Institute for Food and Resource Economics, University of Bonn</p>
<b>4:33-4:43pm</b> (16:33-16:43)	<b>Discussion</b>
<b>4:43-4:58pm</b> (16:43-16:58)	<p><b><u>The trade and competitiveness effects of different decarbonization policies</u> (#7574)</b></p> <p>— <b>Eddy Bekkers</b>, World Trade Organization</p>
<b>4:58-5:08pm</b> (16:58-17:08)	<b>Discussion</b>
<b>5:08-5:23pm</b> (17:08-17:23)	<p><b><u>Estimating Economy-Wide Climate Change Impacts on the U.S. Economy: Implications from FrEDI-USREP</u> (#7521)</b></p> <p>— <b>Mei Yuan</b>, MIT Center for Sustainability Science and Strategy</p>
<b>5:23-5:33pm</b> (17:23-17:33)	<b>Discussion</b>
<b>5:33-5:48pm</b> (17:33-17:48)	<p><b><u>Modeling agricultural emission reduction policy in Denmark under alternative abatement technology catalogues in a global CGE model</u> (#7484)</b></p> <p>— <b>Laerke Jensbye</b>, University of Copenhagen</p>
<b>5:48-5:58pm</b> (17:48-17:58)	<b>Discussion</b>
<b>5:58-6:00pm</b> (17:58-18:00)	<b>Session Closing</b>

WEDNESDAY, JUNE 25

## Detailed Schedule

Presenters should arrive to their assigned session room 10 minutes prior to the start of the session with their presentation on a USB drive in both PowerPoint and PDF formats. Times listed within each session are targets and may vary slightly.

**Looking for a paper?**

Search by ID# at: <http://www.gtap.org/events/conferences/2025/>

Time (CAT, UTC+2)	Event	Location
<b>4:15-6:00pm</b> (16:15-18:00)	<b>Organized Session #12</b>	<b>AD 10</b>

***Value chains, economic diversification and food security in Africa***

**Organized by:** Simon Mevel, United Nations Economic Commission for Africa

**Session Chair:** Laura Naliaka, United Nations Economic Commission for Africa

<b>4:15-4:18pm</b> (16:15-16:18)	<b>Session Introduction</b>
<b>4:18-4:33pm</b> (16:18-16:33)	<b><u>Do Regional Value Chains (RVCs) foster Economic Diversification in Africa? (#7443)</u></b> — <b>Abdoul Karim Theophile Ouedraogo</b> , Universite de Bourgogne
<b>4:33-4:43pm</b> (16:33-16:43)	<b>Discussion</b>
<b>4:43-4:58pm</b> (16:43-16:58)	<b><u>Is women's economic empowerment a factor in African countries' participation in global value chains? (#7424)</u></b> — <b>Prince Piva Asaloko</b> , University of Kisangani
<b>4:58-5:08pm</b> (16:58-17:08)	<b>Discussion</b>
<b>5:08-5:23pm</b> (17:08-17:23)	<b><u>The Nexus Between Trade Policy Initiatives and Food Security in Botswana- A Recursive Dynamic Computable General Equilibrium Modeling Approach (#7543)</u></b> — <b>Koketso Gatsoswe</b> , University of Botswana
<b>5:23-5:33pm</b> (17:23-17:33)	<b>Discussion</b>
<b>5:33-5:48pm</b> (17:33-17:48)	<b><u>Unraveling the contribution of Trade Facilitation to Food Security: A Panel Data Analysis in Sub-Saharan Africa (#7478)</u></b> — <b>Moukaila Mouzamilou Takpara</b> , United Nations Economic Commission for Africa
<b>5:48-5:58pm</b> (17:48-17:58)	<b>Discussion</b>
<b>5:58-6:00pm</b> (17:58-18:00)	<b>Session Closing</b>

**WEDNESDAY, JUNE 25****Detailed Schedule**

Presenters should arrive to their assigned session room 10 minutes prior to the start of the session with their presentation on a USB drive in both PowerPoint and PDF formats. Times listed within each session are targets and may vary slightly.

**Looking for a paper?**

Search by ID# at: <http://www.gtap.org/events/conferences/2025/>

Time (CAT, UTC+2)	Event	Location
<b>4:15-5:35pm</b> (16:15-17:35)	<b>Session #13</b>	<b>AD 11</b>

**Industrialization**

**Session Chair:** **Shenjie Chen**, Office of the Chief Economist, Global Affairs Canada

<b>4:15-4:18pm</b> (16:15-16:18)	<b>Session Introduction</b>
<b>4:18-4:33pm</b> (16:18-16:33)	<b><u>Analyzing Overcapacity and Subsidies in Industrial Policy Using GTAP</u></b> (#7562) — <b>Jingliang Xiao</b> , Office of the Chief Economist, Global Affairs Canada
<b>4:33-4:43pm</b> (16:33-16:43)	<b>Discussion</b>
<b>4:43-4:58pm</b> (16:43-16:58)	<b><u>[Value] chain reactions: how does China's upskilling affect other industrializing economies?</u></b> (#7573) — <b>Anna Strutt</b> , University of Waikato
<b>4:58-5:08pm</b> (16:58-17:08)	<b>Discussion</b>
<b>5:08-5:23pm</b> (17:08-17:23)	<b><u>Mining boom and economic growth: A case study of the Simandou project in Guinea using a new CGE model</u></b> (#7556) — <b>Bernabe Sanchez</b> , Bowecon Ltd
<b>5:23-5:33pm</b> (17:23-17:33)	<b>Discussion</b>
<b>5:33-5:35pm</b> (17:33-17:35)	<b>Session Closing</b>



## WEDNESDAY, JUNE 25

## Detailed Schedule

Presenters should arrive to their assigned session room 10 minutes prior to the start of the session with their presentation on a USB drive in both PowerPoint and PDF formats. Times listed within each session are targets and may vary slightly.

**Looking for a paper?**

Search by ID# at: <http://www.gtap.org/events/conferences/2025/>

Time (CAT, UTC+2)	Event	Location
<b>6:00-8:30pm</b> (18:00-20:30)	<b>Reception and Awards Ceremony</b>	<b>Terrace 1</b>

**Awards Ceremony** (approx. 7:00pm / 19:00)

- Alan A. Powell Award
- GTAP Research Fellows
- Travel Funding Awards
- GTAP Conference Scholars Program

**THURSDAY, JUNE 26**

**Distinguished Plenary Speaker**

***Improving Food Security in Eastern Africa through Greater Intra-Regional Trade***



**Dr. Andrew Mold**

Director

Regional Office for Eastern Africa, United Nations Economic Commission for Africa

Andrew Mold is the Director at the office for East Africa of Economic Commission for Africa. He has a PhD. in economics (Complutense University, Madrid) and has worked for the United Nations in Costa Rica, Chile, Ethiopia, Chile and Rwanda. He was also a Senior Economist at the OECD in Paris. His work has focused on international trade, multinational corporations and regional integration. He is co-author (with Francis Mangeni) of the book 'Borderless Africa - A Sceptic's Guide to the Continental Free Trade Area' (Hurst & Company/Oxford University Press, 2024).

## THURSDAY, JUNE 26

## Schedule Overview

Session details for this day are listed on pages 38-51. You can also access the conference schedule through the Whova mobile app (see page 3).

Time (CAT, UTC+2)	Event	Location
9:00-10:45am	<b>Session #14</b> - Pg. 38 <i>Geopolitical Economic Impacts</i>	AD 12
	<b>Organized Session #15</b> - Pg. 39 <i>Informing agricultural value chain policy and investment choices for inclusive economic development</i>	AD 1
	<b>Organized Session #16</b> - Pg. 40 <i>Young African Researchers</i>	AD 4
	<b>Session #17</b> - Pg. 41 <i>Climate Change Policy</i>	AD 10
10:45-11:15am	<b>Coffee Break</b>	Foyer 1B
11:15am-1:00pm (11:15-13:00)	<b>Organized Session #18</b> - Pg. 42 <i>Improving the representation of investment flows, technological details and climate policy instruments in the economic models</i>	AD 12
	<b>Session #19</b> - Pg. 43 <i>Agricultural and Food Policies</i>	AD 1
	<b>Session #20</b> - Pg. 44 <i>Modelling Innovations: Dynamic Baselines and Interactive Interfaces</i>	AD 4
	<b>Organized Session #21</b> - Pg. 45 <i>Compiling data for policy analysis, with a focus on GTAP Data Base and Africa</i>	AD 10
1:00-2:30pm (13:00-14:30)	<b>Lunch</b> (Don't forget the daily lunch voucher provided with your conference materials!)	Auditorium Club
2:30-4:15pm (14:30-16:15)	<b>Organized Session #22</b> - Pg. 47 <i>Dietary transition and food loss and waste reduction policies: global and regional implications</i>	AD 12
	<b>Session #23</b> - Pg. 48 <i>African Continental Free Trade Area and Development Policies in Africa</i>	AD 1
	<b>Organized Session #24</b> - Pg. 49 <i>Integrating Africa Forward: From Threads to Hubs</i>	AD 4
	<b>Session #25</b> - Pg. 50 <i>Use of Technology and Economic and Social Implications</i>	AD 10
4:15-4:45pm (16:15-16:45)	<b>Coffee Break</b>	Foyer 1B
4:45-5:30pm (16:45-17:30)	<b>Plenary Session</b> - Pg. 51 <i>Improving Food Security in Eastern Africa through Greater Intra-Regional Trade</i>	AD 12
5:45pm (17:45)	<b>Dinner</b>	Larder Restaurant (Radisson Blu Hotel)

**THURSDAY, JUNE 26****Detailed Schedule**

Presenters should arrive to their assigned session room 10 minutes prior to the start of the session with their presentation on a USB drive in both PowerPoint and PDF formats. Times listed within each session are targets and may vary slightly.

**Looking for a paper?**

Search by ID# at: <http://www.gtap.org/events/conferences/2025/>

Time (CAT, UTC+2)	Event	Location
<b>8:00am-5:00pm</b> (08:00-17:00)	<b>Onsite Check-in</b>	<b>Outside AD 12</b>

<b>9:00-10:45am</b>	<b>Session #14</b>	<b>AD 12</b>
---------------------	--------------------	--------------

***Geopolitical Economic Impacts***

**Session Chair:** Eddy Bekkers, World Trade Organization

<b>9:00-9:03am</b>	<b>Session Introduction</b>
<b>9:03-9:18am</b>	<b><u>Tracing Decomposed Income Inequality Indices in India</u></b> (#7545) — Ganesh Sivamani, CSEP
<b>9:18-9:28am</b>	<b>Discussion</b>
<b>9:28-9:43am</b>	<b><u>Sentiments and similarities analysis to convert development programs into investment partnerships: designing a conversion matrix to reshape the SDGs, RBF and Agenda 2063 in the New Era of Pan-Africanism</u></b> (#7413) — Valery Mfondoum, Freelance consultant
<b>9:43-9:53am</b>	<b>Discussion</b>
<b>9:53-10:08am</b>	<b><u>The Impact of Geopolitical Polarization on Trade Policies in Africa: A BRICS Perspective</u></b> (#7511) — Mussie Mindaye Hailesilassie, Messina University *Young Scholars Initiative Funding Recipient
<b>10:08-10:18am</b>	<b>Discussion</b>
<b>10:18-10:33am</b>	<b><u>End of development-friendly trade policy: Could AGOA expiry harm Sub-Saharan Africa?</u></b> (#7485) — Tim Vogel, German Institute of Development and Sustainability
<b>10:33-10:43am</b>	<b>Discussion</b>
<b>10:43-10:45am</b>	<b>Session Closing</b>

THURSDAY, JUNE 26

## Detailed Schedule

Presenters should arrive to their assigned session room 10 minutes prior to the start of the session with their presentation on a USB drive in both PowerPoint and PDF formats. Times listed within each session are targets and may vary slightly.

**Looking for a paper?**

Search by ID# at: <http://www.gtap.org/events/conferences/2025/>

Time (CAT, UTC+2)	Event	Location
9:00-10:45am	Organized Session #15	AD 1

### ***Informing agricultural value chain policy and investment choices for inclusive economic development***

**Organized by:** Karl Pauw, International Food Policy Research Institute

**Session Chair:** James Thurlow, International Food Policy Research Institute

9:00-9:03am	Session Introduction
9:03-9:18am	<b><u>An overview of the PPVC Approach</u></b> (#7534) — Mmatlou Kalaba, Bureau for Food and Agricultural Policy (BFAP)
9:18-9:28am	Discussion
9:28-9:43am	<b><u>Value Chain Prioritization for Inclusive Agricultural Transformation through the PPVC Approach: A Case Study on Ghana</u></b> (#7533) — Nana Amma Asante-Poku, Institute of Statistical, Social and Economic Research, University of Ghana
9:43-9:53am	Discussion
9:53-10:08am	<b><u>Unlocking Potential for Development of Kenya's Aquaculture Sector</u></b> (#7481) — Tim Njeru, ANAPRI
10:08-10:18am	Discussion
10:18-10:43am	Discussant — Tinashe Kapuya, ANAPRI
10:43-10:45am	Session Closing

**THURSDAY, JUNE 26****Detailed Schedule**

Presenters should arrive to their assigned session room 10 minutes prior to the start of the session with their presentation on a USB drive in both PowerPoint and PDF formats. Times listed within each session are targets and may vary slightly.

**Looking for a paper?**

Search by ID# at: <http://www.gtap.org/events/conferences/2025/>

Time (CAT, UTC+2)	Event	Location
9:00-10:45am	Organized Session #16	AD 4

**Young African Researchers**

**Organized by:** Victor Nechifor, Joint Research Centre

**Session Chair:** Dorothee Flaig, University of Hohenheim

9:00-9:03am	Session Introduction
9:03-9:18am	<u>A General Equilibrium Analysis of the EU regulations on South Africa's Citrus Industry</u> (#7510) — Phelelani Sibiya, National Agricultural Marketing Council
9:18-9:28am	Discussion
9:28-9:43am	<u>Irrigation as Climate Change Adaptation Strategy: A CGE Analysis for Tanzania</u> (#7526) — Mgeni Msafiri, University of Dodoma
9:43-9:53am	Discussion
9:53-10:08am	<u>Trade, energy efficiency and low-carbon development in Kenya</u> (#7529) — Shadrack Mwatu, KIPPRA
10:08-10:18am	Discussion
10:18-10:33am	<u>Economy-wide effects of VAT-free chicken meat in South Africa: Implications for food security</u> (#7532) — Bhekani Zondo, National Agricultural Marketing Council
10:33-10:43am	Discussion
10:43-10:45am	Session Closing

**THURSDAY, JUNE 26****Detailed Schedule**

Presenters should arrive to their assigned session room 10 minutes prior to the start of the session with their presentation on a USB drive in both PowerPoint and PDF formats. Times listed within each session are targets and may vary slightly.

**Looking for a paper?**

Search by ID# at: <http://www.gtap.org/events/conferences/2025/>

Time (CAT, UTC+2)	Event	Location
9:00-10:45am	Session #17	AD 10

**Climate Change Policy**

**Session Chair:** Mike Bourne, Department for Environment, Food and Rural Affairs (DEFRA)

9:00-9:03am	Session Introduction	
9:03-9:18am	<u>Navigating the trade-climate nexus for a carbon neutral economy</u> (#7549) — Rob Dellink, OECD	
9:18-9:28am	Discussion	
9:28-9:43am	<u>Energy Transition, Energy Policy and Macroeconomic Performance in Nigeria: A Computable General Equilibrium Approach</u> (#7428) — Eyitemi Fasanu, Covenant University *PANAP Conference Participation Grant Recipient	
9:43-9:53am	Discussion	
9:53-10:08am	<u>Analyzing the Agricultural Risks of Meeting the Paris Agreement's 1.5°C and 2°C Targets in China</u> (#7465) — Tariq Ali, Jiangxi Agricultural University	
10:08-10:18am	Discussion	
10:18-10:33am	<u>Can more ambitious NDCs also lead to economic growth?</u> (#7516) — Elisa Lanzi, OECD Environment Directorate	
10:33-10:43am	Discussion	
10:43-10:45am	Session Closing	
10:45-11:15am	Coffee Break	Foyer 1B



THURSDAY, JUNE 26

## Detailed Schedule

Presenters should arrive to their assigned session room 10 minutes prior to the start of the session with their presentation on a USB drive in both PowerPoint and PDF formats. Times listed within each session are targets and may vary slightly.

**Looking for a paper?**

Search by ID# at: <http://www.gtap.org/events/conferences/2025/>

Time (CAT, UTC+2)	Event	Location
11:15am-12:35pm	Organized Session #18	AD 12

### ***Improving the representation of investment flows, technological details and climate policy instruments in the economic models***

**Organized by:** Maksym Chepeliev, Center for Global Trade Analysis, Department of Agricultural Economics, Purdue University

**Session Chair:** Maksym Chepeliev, Center for Global Trade Analysis, Department of Agricultural Economics, Purdue University

11:15-11:18am	Session Introduction
11:18-11:33am	<u>Linking Computable General Equilibrium Model with Power Sector Optimization Model to Evaluate Net-Zero Scenarios for Korea</u> (#7477) — Yong-Gun Kim, Yonsei University
11:33-11:43am	Discussion
11:43-11:58am	<u>Investment in CGE models: Alternatives to the standard GTAP closure</u> (#7542) — Dominique van der Mensbrugghe, Center for Global Trade Analysis, Department of Agricultural Economics, Purdue University
11:58am-12:08pm	Discussion
12:08-12:23pm	<u>Modelling investment for the energy transition</u> (#7461) — Matthias Weitzel, European Commission - Joint Research Centre
12:23-12:33pm	Discussion
12:33-12:35pm	Session Closing

**THURSDAY, JUNE 26****Detailed Schedule**

Presenters should arrive to their assigned session room 10 minutes prior to the start of the session with their presentation on a USB drive in both PowerPoint and PDF formats. Times listed within each session are targets and may vary slightly.

**Looking for a paper?**

Search by ID# at: <http://www.gtap.org/events/conferences/2025/>

Time (CAT, UTC+2)	Event	Location
<b>11:15am-1:00pm</b> (11:15-13:00)	<b>Session #19</b>	<b>AD 1</b>

***Agricultural and Food Policies***

**Session Chair:** Aikaterini Kavallari, Food and Agriculture Organization of the United Nations

<b>11:15-11:18am</b>	<b>Session Introduction</b>
<b>11:18-11:33am</b>	<b><u>Building resilience: Impact of pesticide reduction strategies on food security</u> (#7546)</b> — Kirsten Boysen-Urban, University of Hohenheim
<b>11:33-11:43am</b>	<b>Discussion</b>
<b>11:43-11:58am</b>	<b><u>Economic and nutritional effects of wheat self-sufficiency in Ethiopia</u> (#7557)</b> — Dorothee Flaig, University of Hohenheim
<b>11:58am-12:08pm</b>	<b>Discussion</b>
<b>12:08-12:23pm</b>	<b><u>Impact of International Commodity Price Fluctuations on Nutritional Quality in Senegal and Togo</u> (#7444)</b> — Assion Adjahila Claverio Lawson Sipoaka, Institutions and Growth Research Laboratory
<b>12:23-12:33pm</b>	<b>Discussion</b>
<b>12:33-12:48pm</b>	<b><u>Trade Effect of the European Union Deforestation Regulation (EUDR) on African Cocoa and Coffee Exports</u> (#7527)</b> — Rodgers Mukwaya, United Nations Economic Commission for Africa
<b>12:48-12:58pm</b>	<b>Discussion</b>
<b>12:58-1:00pm</b> (12:58-13:00)	<b>Session Closing</b>

THURSDAY, JUNE 26

## Detailed Schedule

Presenters should arrive to their assigned session room 10 minutes prior to the start of the session with their presentation on a USB drive in both PowerPoint and PDF formats. Times listed within each session are targets and may vary slightly.

**Looking for a paper?**

Search by ID# at: <http://www.gtap.org/events/conferences/2025/>

Time (CAT, UTC+2)	Event	Location
11:15am-12:35pm	Session #20	AD 4

### ***Modelling Innovations: Dynamic Baselines and Interactive Interfaces***

**Session Chair:** **Alla Golub**, Center for Global Trade Analysis, Department of Agricultural Economics, Purdue University

11:15-11:18am	Session Introduction
11:18-11:33am	<p><b><u>Towards consistent and calibratable capital stock accumulation in multi-annual step recursive dynamics</u></b> (#7475)</p> <p>— <b>Hao David Cui</b>, Wageningen Economic Research</p>
11:33-11:43am	Discussion
11:43-11:58am	<p><b><u>Achieving current account balance in long-run projections of the global economy in the dynamic GTAP model</u></b> (#7537)</p> <p>— <b>Paul Gretton</b>, Australian National University</p>
11:58am-12:08pm	Discussion
12:08-12:23pm	<p><b><u>Bridging the Gap: Strengthening Policymaker-Modeller Collaboration via Interactive Model Interfaces</u></b> (#7471)</p> <p>— <b>Lindsay Shutes</b>, Elevate Economics</p>
12:23-12:33pm	Discussion
12:33-12:35pm	Session Closing

THURSDAY, JUNE 26

## Detailed Schedule

Presenters should arrive to their assigned session room 10 minutes prior to the start of the session with their presentation on a USB drive in both PowerPoint and PDF formats. Times listed within each session are targets and may vary slightly.

**Looking for a paper?**

Search by ID# at: <http://www.gtap.org/events/conferences/2025/>

Time (CAT, UTC+2)	Event	Location
<b>11:15am-1:00pm</b> (11:15-13:00)	<b>Organized Session #21</b>	<b>AD 10</b>

### ***Compiling data for policy analysis, with a focus on GTAP Data Base and Africa***

**Organized by:** Simon Mevel, United Nations Economic Commission for Africa

**Session Chair:** Angel Aguiar, Center for Global Trade Analysis, Department of Agricultural Economics, Purdue University

<b>11:15-11:18am</b>	<b>Session Introduction</b>
<b>11:18-11:28am</b>	<b><u>Filling data gaps for Africa in GTAP Data Base</u> (#7429)</b> — Simon Mevel, United Nations Economic Commission for Africa
<b>11:28-11:43am</b>	<b><u>Experience on data compilation for GTAP Data Base, focus on Eswatini</u> (#7430)</b> — Nsika Melusi Dlamini, CSO
<b>11:43-11:58am</b>	<b><u>Experience on data compilation for GTAP Data Base, focus on Mauritius</u> (#7431)</b> — Celine Niwemahoro, SCUB consultants
<b>11:58am-12:13pm</b>	<b><u>Experience on data compilation for GTAP Data Base, focus on Cameroon</u> (#7432)</b> — Achille Carlos Deffo, National Institute of Statistics
<b>12:13-12:23pm</b>	<b><u>From compiled data to the release of a new version of GTAP Data Base</u> (#7433)</b> — Angel Aguiar, Center for Global Trade Analysis, Department of Agricultural Economics, Purdue University
<b>12:23-12:38pm</b>	<b><u>Insights on data collection/compilation on informal cross-border trade and trade-related gender statistics</u> (#7434)</b> — Laura Naliaka, United Nations Economic Commission for Africa
<b>12:38-12:58pm</b>	<b>Discussion</b>
<b>12:58-1:00pm</b> (12:58-13:00)	<b>Session Closing</b>

## THURSDAY, JUNE 26

## Detailed Schedule

Presenters should arrive to their assigned session room 10 minutes prior to the start of the session with their presentation on a USB drive in both PowerPoint and PDF formats. Times listed within each session are targets and may vary slightly.

**Looking for a paper?**

Search by ID# at: <http://www.gtap.org/events/conferences/2025/>

Time (CAT, UTC+2)	Event	Location
1:00-2:30pm (13:00-14:30)	Lunch	Auditorium Club

The Auditorium Club Restaurant is located on the first floor, immediately above the Filini Restaurant. Guests can use the stairs by the entrance or the ground floor ramp that leads to the Auditorium and cross a bridge to reach the restaurant.

**IMPORTANT**

Attendees must present a lunch voucher to the Auditorium Club Restaurant staff. Lunch vouchers for each day were provided to registrants upon onsite check-in, along with their conference materials.

**Extra vouchers are not available.** Attendees are responsible for bringing their lunch vouchers each day

THURSDAY, JUNE 26

## Detailed Schedule

Presenters should arrive to their assigned session room 10 minutes prior to the start of the session with their presentation on a USB drive in both PowerPoint and PDF formats. Times listed within each session are targets and may vary slightly.

**Looking for a paper?**

Search by ID# at: <http://www.gtap.org/events/conferences/2025/>

Time (CAT, UTC+2)	Event	Location
<b>2:30-4:15pm</b> (14:30-16:15)	<b>Organized Session #22</b>	<b>AD 12</b>

### ***Dietary transition and food loss and waste reduction policies: global and regional implications***

**Organized by:** Maksym Chepeliev, Center for Global Trade Analysis, Department of Agricultural Economics, Purdue University

**Session Chair:** Maksym Chepeliev, Center for Global Trade Analysis, Department of Agricultural Economics, Purdue University

**2:30-2:33pm**  
(14:30-14:33)

**Session Introduction**

**2:33-2:48pm**  
(14:33-14:48)

**How the shift to healthier and more sustainable diets is made affects the scope for diet change and its environmental, and distributional outcomes - a global modelling study with the MAGNET model** (#7468)

— Hans van Meijl, Wageningen Social and Economic Research

**2:48-2:58pm**  
(14:48-14:58)

**Discussion**

**2:58-3:13pm**  
(14:58-15:13)

**Global Dietary Transition and Food Loss and Waste Reduction: Impacts and Interactions** (#7567)

— Alessandro Gatto, International Policy - Wageningen Social and Economic Research

**3:13-3:23pm**  
(15:13-15:23)

**Discussion**

**3:23-3:38pm**  
(15:23-15:38)

**The potential effects and economic feasibility of reducing food loss and waste** (#7448)

— Claude Nenert, OECD

**3:38-3:48pm**  
(15:38-15:48)

**Discussion**

**3:48-4:03pm**  
(15:48-16:03)

**A Multi-Scale Analysis of Food Waste Reduction: Sustainable Gains and Equity Challenges** (#7577)

— Emiliano Lopez Barrera, Texas A&M University

**4:03-4:13pm**  
(16:03-16:13)

**Discussion**

**4:13-4:15pm**  
(16:13-16:15)

**Session Closing**

**THURSDAY, JUNE 26****Detailed Schedule**

Presenters should arrive to their assigned session room 10 minutes prior to the start of the session with their presentation on a USB drive in both PowerPoint and PDF formats. Times listed within each session are targets and may vary slightly.

**Looking for a paper?**

Search by ID# at: <http://www.gtap.org/events/conferences/2025/>

Time (CAT, UTC+2)	Event	Location
<b>2:30-4:15pm</b> (14:30-16:15)	<b>Session #23</b>	<b>AD 1</b>

## ***African Continental Free Trade Area and Development Policies in Africa***

**Session Chair:** **Rodgers Mukwaya**, United Nations Economic Commission for Africa

<b>2:30-2:33pm</b> (14:30-14:33)	<b>Session Introduction</b>
<b>2:33-2:48pm</b> (14:33-14:48)	<b><u>The potential impact of the African Continental Free Trade Area on Trade in Kenya.</u></b> (#7488) — <b>John Mburu</b> , Kenyatta University
<b>2:48-2:58pm</b> (14:48-14:58)	<b>Discussion</b>
<b>2:58-3:13pm</b> (14:58-15:13)	<b><u>Labor Mobility Under the AfCFTA: A CGE Analysis of Macroeconomic and Sectoral Impacts in Eastern Africa</u></b> (#7451) — <b>Patrice Relouende Zidouemba</b> , N. BONI University
<b>3:13-3:23pm</b> (15:13-15:23)	<b>Discussion</b>
<b>3:23-3:38pm</b> (15:23-15:38)	<b><u>Democracy and human capital in Africa</u></b> (#7435) — <b>Marcellin Stephane Bella Ngadena</b> , UNECA
<b>3:38-3:48pm</b> (15:38-15:48)	<b>Discussion</b>
<b>3:48-4:03pm</b> (15:48-16:03)	<b><u>The Adoption of a Common Currency Within the East African Community: What Impact on Trade?</u></b> (#7415) — <b>Stanley Abban</b> , Labone Senior High
<b>4:03-4:13pm</b> (16:03-16:13)	<b>Discussion</b>
<b>4:13-4:15pm</b> (16:13-16:15)	<b>Session Closing</b>



THURSDAY, JUNE 26

## Detailed Schedule

Presenters should arrive to their assigned session room 10 minutes prior to the start of the session with their presentation on a USB drive in both PowerPoint and PDF formats. Times listed within each session are targets and may vary slightly.

**Looking for a paper?**

Search by ID# at: <http://www.gtap.org/events/conferences/2025/>

Time (CAT, UTC+2)	Event	Location
<b>2:30-3:50pm</b> (14:30-15:50)	<b>Organized Session #24</b>	<b>AD 4</b>

***Integrating Africa Forward: From Threads to Hubs***

**Organized by:** Woubet Kassa, World Bank  
Jean-Christophe Maur, World Bank

**Session Chair:** Woubet Kassa, World Bank

**2:30-2:33pm**  
(14:30-14:33)

**Session Introduction**

**2:33-2:48pm**  
(14:33-14:48)

**Assessing Africa's Revealed Capabilities and Unlocking Potential Opportunities (#7505)**  
— Woubet Kassa, World Bank

**2:48-2:58pm**  
(14:48-14:58)

**Discussion**

**2:58-3:13pm**  
(14:58-15:13)

**What Makes a Trade Agreement Effective? The case of the AfCFTA (#7504)**  
— Jean-Christophe Maur, World Bank

**3:13-3:23pm**  
(15:13-15:23)

**Discussion**

**3:23-3:38pm**  
(15:23-15:38)

**Trade Barriers or Catalysts? Non-Tariff Measures and Firm-Level Trade Margins (#7579)**  
— Abraham Lartey, SOAS, University of London

**3:38-3:48pm**  
(15:38-15:48)

**Discussion**

**3:48-3:50pm**  
(15:48-15:50)

**Session Closing**

**THURSDAY, JUNE 26****Detailed Schedule**

Presenters should arrive to their assigned session room 10 minutes prior to the start of the session with their presentation on a USB drive in both PowerPoint and PDF formats. Times listed within each session are targets and may vary slightly.

**Looking for a paper?**

Search by ID# at: <http://www.gtap.org/events/conferences/2025/>

Time (CAT, UTC+2)	Event	Location
<b>2:30-4:15pm</b> (14:30-16:15)	<b>Session #25</b>	<b>AD 10</b>

***Use of Technology and Economic and Social Implications***

**Session Chair:** Ronie Nguenkwé, PKFokam Institute of Excellence

<b>2:30-2:33pm</b> (14:30-14:33)	<b>Session Introduction</b>
<b>2:33-2:48pm</b> (14:33-14:48)	<b><u>404 Not Found: The Internet and International Trade</u></b> (#7456) — Volker Nitsch, TU Darmstadt
<b>2:48-2:58pm</b> (14:48-14:58)	<b>Discussion</b>
<b>2:58-3:13pm</b> (14:58-15:13)	<b><u>Fintech, Credit Constraints and Educational Intergenerational Mobility: Evidence from Cameroon</u></b> (#7462) — Yvan Audrey Kamdem, University of Yaounde 2 <i>*Young Scholars Initiative Funding Recipient</i>
<b>3:13-3:23pm</b> (15:13-15:23)	<b>Discussion</b>
<b>3:23-3:38pm</b> (15:23-15:38)	<b><u>Do ICTs Reduce Informal Economy? Evidence From Some Developing Countries</u></b> (#7480) — Josiane Ngamgo, University of Yaounde 2, Cameroon <i>*Young Scholars Initiative Funding Recipient</i>
<b>3:38-3:48pm</b> (15:38-15:48)	<b>Discussion</b>
<b>3:48-4:03pm</b> (15:48-16:03)	<b><u>The impact of mobile money on inequality: a panel data analysis</u></b> (#7455) — Enrico Nichelatti, University of Luxembourg
<b>4:03-4:13pm</b> (16:03-16:13)	<b>Discussion</b>
<b>4:13-4:15pm</b> (16:13-16:15)	<b>Session Closing</b>

**THURSDAY, JUNE 26****Detailed Schedule**

Presenters should arrive to their assigned session room 10 minutes prior to the start of the session with their presentation on a USB drive in both PowerPoint and PDF formats. Times listed within each session are targets and may vary slightly.

**Looking for a paper?**

Search by ID# at: <http://www.gtap.org/events/conferences/2025/>

Time (CAT, UTC+2)	Event	Location
<b>4:15-4:45pm</b> (16:15-16:45)	<b>Coffee Break</b>	<b>Foyer 1B</b>

<b>4:45-5:30pm</b> (16:45-17:30)	<b>Plenary Session</b>	<b>AD 12</b>
-------------------------------------	------------------------	--------------

## ***Improving Food Security in Eastern Africa through Greater Intra-Regional Trade***

**Session Chair:** Channing Arndt, Center for Global Trade Analysis, Department of Agricultural Economics, Purdue University

<b>4:45-4:48pm</b> (16:45-16:48)	<b>Session Introduction</b>
<b>4:48-5:08pm</b> (16:48-17:08)	<b>Improving Food Security in Eastern Africa through Greater Intra-Regional Trade</b> — <b>Andrew Mold</b> , Regional Office for Eastern Africa, United Nations Economic Commission for Africa
<b>5:08-5:28pm</b> (17:08-17:28)	<b>Discussion</b>
<b>5:28-5:30pm</b> (17:28-17:30)	<b>Session Closing</b>

<b>5:45pm</b> (17:45)	<b>Dinner</b>	<b>Larder Restaurant</b> (Radisson Blu Hotel)
--------------------------	---------------	--

**FRIDAY, JUNE 27**

**Distinguished Plenary Speaker**

## ***Low Carbon Transitions: Implications and Responses for the African Fossil Fuels Industry***



### **Mustafa Babiker**

Principal Professional  
Saudi Aramco

Mustafa H. Babiker is an economist with a Ph.D. in Environmental and Natural Resources Economics. Mustafa is currently a principal professional with Saudi Aramco and an active research associate with MIT Joint Program on the Science and Policy of Global Change. Mustafa's previous employment experience includes working for MIT and for the Arab Planning Institute. Babiker's main research interests include energy economics, climate change policies, economic development, and applied computable general equilibrium modeling. Mustafa is an author of a number of publications and a participant in IPCC activities including being a review editor for the 4th assessment report, a lead author for the 5th assessment report, a lead author for the IPCC special report on 1.5C warming, and a coordinating lead author on the IPCC 6th assessment report.

**FRIDAY, JUNE 27****Schedule Overview**

Session details for this day are listed on pages 54-66. You can also access the conference schedule through the Whova mobile app (see page 3).

<b>Time (CAT, UTC+2)</b>	<b>Event</b>	<b>Location</b>
<b>9:00-10:45am</b>	<b>Session #26</b> - Pg. 54 <i>Climate Impacts in Africa</i>	<b>AD 12</b>
	<b>Organized Session #27</b> - Pg. 55 <i>Entrepreneurship and digital trade in Africa</i>	<b>AD 1</b>
	<b>Session #28</b> - Pg. 56 <i>Environmental Policies and Agriculture/Food Sector Implications</i>	<b>AD 4</b>
	<b>Session #29</b> - Pg. 57 <i>Multi-scale and Geospatial Modeling</i>	<b>AD 10</b>
<b>10:45-11:15am</b>	<b>Coffee Break</b>	<b>Foyer 1B</b>
<b>11:15am-12:35pm</b>	<b>Session #30</b> - Pg. 58 <i>Dietary Health and Shifts</i>	<b>AD 12</b>
	<b>Organized Session #31</b> - Pg. 59 <i>Addressing Planetary Boundaries Through an Economic Lens: Trade-offs, Synergies, and Market Spillovers</i>	<b>AD 1</b>
	<b>Session #32</b> - Pg. 60 <i>Modeling Advances</i>	<b>AD 4</b>
	<b>Organized Session #33</b> - Pg. 61 <i>Extending GTAP's land use modeling capabilities</i>	<b>AD 10</b>
<b>12:35-2:05pm</b> (12:35-14:05)	<b>Lunch</b> (Don't forget the daily lunch voucher provided with your conference materials!)	<b>Auditorium Club</b>
<b>2:05-3:50pm</b> (14:05-15:50)	<b>Organized Session #34</b> - Pg. 62 <i>Economic resilience and food security in Africa</i>	<b>AD 12</b>
	<b>Session #35</b> - Pg. 63 <i>Value Chains</i>	<b>AD 1</b>
	<b>Session #36</b> - Pg. 64 <i>Model Development, Extension, and Evaluation</i>	<b>AD 4</b>
	<b>Session #37</b> - Pg. 65 <i>Climate Change Policy</i>	<b>AD 10</b>
<b>3:50-4:20pm</b> (15:50-16:20)	<b>Coffee Break</b>	<b>Foyer 1B</b>
<b>4:20-5:20pm</b> (16:20-17:20)	<b>Plenary Session and Closing Remarks</b> - Pg. 66 <i>Low Carbon Transitions: Implications and Responses for the African Fossil Fuels Industry</i>	<b>AD 12</b>

**FRIDAY, JUNE 27****Detailed Schedule**

Presenters should arrive to their assigned session room 10 minutes prior to the start of the session with their presentation on a USB drive in both PowerPoint and PDF formats. Times listed within each session are targets and may vary slightly.

**Looking for a paper?**

Search by ID# at: [www.gtap.org/events/conferences/2025/](http://www.gtap.org/events/conferences/2025/)

Time (CAT, UTC+2)	Event	Location
8:00am-12:00pm	Onsite Check-in	Outside AD 12

9:00-10:45am	Session #26	AD 12
--------------	-------------	-------

***Climate Impacts in Africa***

**Session Chair:** Bhekani Zondo, National Agricultural Marketing Council

9:00-9:03am	Session Introduction
9:03-9:18am	<b><u>Economy-Wide Impact Assessment of Home Gardening as an Adaptation Strategy to Climate Change in Kenya</u></b> (#7496) — Peter Mwangi, Humboldt-Universitat zu Berlin
9:18-9:28am	Discussion
9:28-9:43am	<b><u>Economy-wide implications of climate change-induced malaria in Kenya: Linking a demographic module to a dynamic CGE model</u></b> (#7528) — Zuhail Elnour, Humboldt-Universitat zu Berlin
9:43-9:53am	Discussion
9:53-10:08am	<b><u>Trade Thrive in Ethiopia: Navigating Climate Change Impact- A Recursive Dynamic CGE Analysis</u></b> (#7486) — Mengistu Alamneh Wassie, Bonn University *PANAP Conference Participation Grant Recipient
10:08-10:18am	Discussion
10:18-10:33am	<b><u>Quantifying the Economic Impacts of Extreme Weather Events in Morocco Under Uncertainty: A Computable General Equilibrium Approach</u></b> (#7553) — Maria Filipa Seara Pereira, Center for Global Trade Analysis, Department of Agricultural Economics, Purdue University
10:33-10:43am	Discussion
10:43-10:45am	Session Closing

FRIDAY, JUNE 27

## Detailed Schedule

Presenters should arrive to their assigned session room 10 minutes prior to the start of the session with their presentation on a USB drive in both PowerPoint and PDF formats. Times listed within each session are targets and may vary slightly.

**Looking for a paper?**

Search by ID# at: [www.gtap.org/events/conferences/2025/](http://www.gtap.org/events/conferences/2025/)

Time (CAT, UTC+2)	Event	Location
9:00-10:20am	Organized Session #27	AD 1

### ***Entrepreneurship and digital trade in Africa***

**Organized by:** Simon Mevel, United Nations Economic Commission for Africa

**Session Chair:** Simon Mevel, United Nations Economic Commission for Africa

9:00-9:03am	Session Introduction
9:03-9:18am	<b><u>Rural Marketplaces in Modern Economies: Evidence from Togo</u></b> (#7558) — Tchapo Gbandi, University of Lome
9:18-9:28am	Discussion
9:28-9:43am	<b><u>Effect of women entrepreneurship and ICT on bilateral trade in Africa: Evidence from a panel study using the extended gravity model</u></b> (#7491) — Koko A Bidias Rigoberte Carine, University of Yaounde II – Soa *GTAP Conference Scholars Program Participant
9:43-9:53am	Discussion
9:53-10:08am	<b><u>Enhancing intra-African digital services trade from a regulatory perspective</u></b> (#7483) — Geoffroy Guepie, Economic Commission for Africa
10:08-10:18am	Discussion
10:18-10:20am	Session Closing



**FRIDAY, JUNE 27****Detailed Schedule**

Presenters should arrive to their assigned session room 10 minutes prior to the start of the session with their presentation on a USB drive in both PowerPoint and PDF formats. Times listed within each session are targets and may vary slightly.

**Looking for a paper?**

Search by ID# at: [www.gtap.org/events/conferences/2025/](http://www.gtap.org/events/conferences/2025/)

Time (CAT, UTC+2)	Event	Location
9:00-10:45am	Session #28	AD 4

### ***Environmental Policies and Agriculture/Food Sector Implications***

**Session Chair:** Janine Pelikan, Thünen Institute of Market Analysis

9:00-9:03am	Session Introduction
9:03-9:18am	<b><u>Beyond Borders: How Trade Policies Affect Deforestation</u></b> (#7450) — Omid Zamani, Thuenen Institute
9:18-9:28am	Discussion
9:28-9:43am	<b><u>Economic impact of restoring rangelands: A CGE approach</u></b> (#7513) — Sawsan Abdul-Jalil, Humboldt University
9:43-9:53am	Discussion
9:53-10:08am	<b><u>Modeling the Formalization of Water Provision in Lebanon: Economic Implications of Strategic Sectoral Investments Using a CGE Framework</u></b> (#7576) — Zein Khraizat, University College London
10:08-10:18am	Discussion
10:18-10:33am	<b><u>The EU-Mercosur Trade Agreement – Implications for the Agricultural and Food Sector</u></b> (#7479) — Janine Pelikan, Thünen Institute of Market Analysis
10:33-10:43am	Discussion
10:43-10:45am	Session Closing

**FRIDAY, JUNE 27****Detailed Schedule**

Presenters should arrive to their assigned session room 10 minutes prior to the start of the session with their presentation on a USB drive in both PowerPoint and PDF formats. Times listed within each session are targets and may vary slightly.

**Looking for a paper?**

Search by ID# at: [www.gtap.org/events/conferences/2025/](http://www.gtap.org/events/conferences/2025/)

Time (CAT, UTC+2)	Event	Location
9:00-10:20am	Session #29	AD 10

***Multi-scale and Geospatial Modeling***

**Session Chair:** **Uris Lantz Baldos**, Center for Global Trade Analysis, Department of Agricultural Economics, Purdue University

9:00-9:03am	Session Introduction	
9:03-9:18am	<b><u>A Framework for Measuring African Ecosystem Services Impacts from Land-Related Policies</u></b> (#7569) — <b>Matthew Braaksma</b> , University of Minnesota	
9:18-9:28am	Discussion	
9:28-9:43am	<b><u>Spatial Inequality in the European ETS-2 Market</u></b> (#7457) — <b>Sigit Perdana</b> , Ecole Polytechnique Federale de Lausanne (Swiss Federal Institute of Technology, Lausanne)	
9:43-9:53am	Discussion	
9:53-10:08am	<b><u>Effects of Wastewater Regulation Policies on Italian Agriculture: A georeferenced approach using the SIMPLE-G framework</u></b> (#7466) — <b>Maria Laura Ojeda</b> , University of Buenos Aires	
10:08-10:18am	Discussion	
10:18-10:20am	Session Closing	
10:45-11:15am	Coffee Break	Foyer 1B

**FRIDAY, JUNE 27****Detailed Schedule**

Presenters should arrive to their assigned session room 10 minutes prior to the start of the session with their presentation on a USB drive in both PowerPoint and PDF formats. Times listed within each session are targets and may vary slightly.

**Looking for a paper?**

Search by ID# at: [www.gtap.org/events/conferences/2025/](http://www.gtap.org/events/conferences/2025/)

Time (CAT, UTC+2)	Event	Location
11:15am-12:35pm	Session #30	AD 12

***Dietary Health and Shifts***

**Session Chair:** Marco Springmann, University of Oxford

11:15-11:18am	Session Introduction
11:18-11:33am	<u>Integrating dietary health, environmental and economic considerations into impact assessment of international trade agreements</u> (#7541) — Florian Freund, Thünen Institute of Market Analysis
11:33-11:43am	Discussion
11:43-11:58am	<u>Hype or Accelerator of Sustainable Dietary Transformation? Evaluating Global Land Use and Spillovers of Diet Shifts from Animal Products to Plant-Based Alternatives.</u> (#7422) — Amelia Espey, University of Hohenheim
11:58am-12:08pm	Discussion
12:08-12:23pm	<u>Human Health, Environment Sustainability, Food Security and Farmers Income Trade-offs in Global Diet Shifts</u> (#7470) — Jian Zong, Peking University
12:23-12:33pm	Discussion
12:33-12:35pm	Session Closing

FRIDAY, JUNE 27

## Detailed Schedule

Presenters should arrive to their assigned session room 10 minutes prior to the start of the session with their presentation on a USB drive in both PowerPoint and PDF formats. Times listed within each session are targets and may vary slightly.

**Looking for a paper?**

Search by ID# at: [www.gtap.org/events/conferences/2025/](http://www.gtap.org/events/conferences/2025/)

Time (CAT, UTC+2)	Event	Location
11:15am-12:35pm	Organized Session #31	AD 1

## ***Addressing Planetary Boundaries Through an Economic Lens: Trade-offs, Synergies, and Market Spillovers***

**Organized by:** Iman Haqiqi, Center for Global Trade Analysis, Department of Agricultural Economics, Purdue University

**Session Chair:** Thomas Hertel, Center for Global Trade Analysis, Department of Agricultural Economics, Purdue University

11:15-11:18am	Session Introduction
11:18-11:33am	<p><b><u>Make nature count; an explorative application of Gross Ecosystem Product and the Ecosystem Stress Index for nature inclusive policymaking</u></b> (#7531)</p> <p>— Willem-Jan Van Zeist, Wageningen Social and Economic Research</p>
11:33-11:43am	Discussion
11:43-11:58am	<p><b><u>Achieving Planetary Boundaries through Economic Policies: Global Impacts of Local Fertilizer Taxes</u></b> (#7519)</p> <p>— Thomas Hertel, Center for Global Trade Analysis, Department of Agricultural Economics, Purdue University</p>
11:58am-12:08pm	Discussion
12:08-12:23pm	<p><b><u>GTAP-RD-InVEST: A forward-looking Earth-economy model to analyze growth and sustainability issues under different climate change, agricultural yield, and policy scenarios</u></b> (#7563)</p> <p>— Erwin Corong, Center for Global Trade Analysis, Department of Agricultural Economics, Purdue University</p>
12:23-12:33pm	Discussion
12:33-12:35pm	Session Closing

**FRIDAY, JUNE 27****Detailed Schedule**

Presenters should arrive to their assigned session room 10 minutes prior to the start of the session with their presentation on a USB drive in both PowerPoint and PDF formats. Times listed within each session are targets and may vary slightly.

**Looking for a paper?**

Search by ID# at: [www.gtap.org/events/conferences/2025/](http://www.gtap.org/events/conferences/2025/)

Time (CAT, UTC+2)	Event	Location
11:15am-12:10pm	Session #32	AD 4

***Modeling Advances***

**Session Chair:** Yong-Gun Kim, Yonsei University

11:15-11:18am Session Introduction

11:18-11:33am **Expanding capabilities for policy evaluation through deep learning emulation of CGE models** (#7530)

— Victor Nechifor, Joint Research Centre

11:33-11:43am Discussion

11:43-11:58am **Integrating Advanced CGE Modeling and AI-Based Scenario Analysis for Climate Policy** (#7560)

— Joel Christoph, European University Institute

*\*Wallace E. Tyner Travel Funding Award Recipient / GTAP Conference Scholars Program Participant*

11:58am-12:08pm Discussion

12:08-12:10pm Session Closing

FRIDAY, JUNE 27

## Detailed Schedule

Presenters should arrive to their assigned session room 10 minutes prior to the start of the session with their presentation on a USB drive in both PowerPoint and PDF formats. Times listed within each session are targets and may vary slightly.

**Looking for a paper?**

Search by ID# at: [www.gtap.org/events/conferences/2025/](http://www.gtap.org/events/conferences/2025/)

Time (CAT, UTC+2)	Event	Location
11:15am-12:10pm	Organized Session #33	AD 10

***Extending GTAP's land use modeling capabilities***

**Organized by:** Micah Cameron-Harp, Kansas State University Department of Agricultural Economics

**Session Chair:** Micah Cameron-Harp, Kansas State University Department of Agricultural Economics

11:15-11:18am	Session Introduction
11:18-11:33am	<b><u>Implementing land supply curves in the GTAP AEZ model</u></b> (#7572) — Uris Lantz Baldos, Center for Global Trade Analysis, Department of Agricultural Economics, Purdue University
11:33-11:43am	Discussion
11:43-11:58am	<b><u>GTAPShape: A flexible approach to spatially disaggregating national land endowments for CGE modeling</u></b> (#7514) — Micah Cameron-Harp, Kansas State University Department of Agricultural Economics
11:58am-12:08pm	Discussion
12:08-12:10pm	Session Closing

12:35-2:05pm (12:35-14:05)	Lunch	Auditorium Club
-------------------------------	-------	-----------------

The Auditorium Club Restaurant is located on the first floor, immediately above the Filini Restaurant. Guests can use the stairs by the entrance or the ground floor ramp that leads to the Auditorium and cross a bridge to reach the restaurant.

**IMPORTANT**

Attendees must present a lunch voucher to the Auditorium Club Restaurant staff. Lunch vouchers for each day were provided to registrants upon onsite check-in, along with their conference materials.

**Extra vouchers are not available.** Attendees are responsible for bringing their lunch vouchers each day

FRIDAY, JUNE 27

## Detailed Schedule

Presenters should arrive to their assigned session room 10 minutes prior to the start of the session with their presentation on a USB drive in both PowerPoint and PDF formats. Times listed within each session are targets and may vary slightly.

**Looking for a paper?**

Search by ID# at: [www.gtap.org/events/conferences/2025/](http://www.gtap.org/events/conferences/2025/)

Time (CAT, UTC+2)	Event	Location
<b>2:05-3:50pm</b> (14:05-15:50)	<b>Organized Session #34</b>	<b>AD 12</b>

***Economic resilience and food security in Africa***

**Organized by:** Victor Nechifor, Joint Research Centre

**Session Chair:** Victor Nechifor, Joint Research Centre

<b>2:05-2:08pm</b> (14:05-14:08)	<b>Session Introduction</b>
<b>2:08-2:23pm</b> (14:08-14:23)	<b><u>Policies for promoting food and nutrition security in Nigeria</u></b> (#7547) — <b>Oluwasola E. Omoju</b> , National Institute for Legislative and Democratic Studies NILDS
<b>2:23-2:33pm</b> (14:23-14:33)	<b>Discussion</b>
<b>2:33-2:48pm</b> (14:33-14:48)	<b><u>The Role of Services in Global Value Chains and the Trajectory of Structural Transformation in Tanzania</u></b> (#7570) — <b>Asiya Maskaeve</b> , University of Dodoma
<b>2:48-2:58pm</b> (14:48-14:58)	<b>Discussion</b>
<b>2:58-3:13pm</b> (14:58-15:13)	<b><u>Analysis of AfCFTA Impacts on Agri-Food Sub-Sectors and Food Security in Cote d'Ivoire</u></b> (#7551) — <b>Souleymane Sadio Diallo</b> , Centre Ivoirien de Recherches Economiques et Sociales - CIRES
<b>3:13-3:23pm</b> (15:13-15:23)	<b>Discussion</b>
<b>3:23-3:38pm</b> (15:23-15:38)	<b><u>Fall in hydrocarbon and cement prices in Niger: What impact on employment and the well-being of men and women?</u></b> (#7517) — <b>Saadatou Alkassoum Sangare</b> , CAPEG - Public policies analysis Institute
<b>3:38-3:48pm</b> (15:38-15:48)	<b>Discussion</b>
<b>3:48-3:50pm</b> (15:48-15:50)	<b>Session Closing</b>

FRIDAY, JUNE 27

## Detailed Schedule

Presenters should arrive to their assigned session room 10 minutes prior to the start of the session with their presentation on a USB drive in both PowerPoint and PDF formats. Times listed within each session are targets and may vary slightly.

**Looking for a paper?**

Search by ID# at: [www.gtap.org/events/conferences/2025/](http://www.gtap.org/events/conferences/2025/)

Time (CAT, UTC+2)	Event	Location
<b>2:05-3:25pm</b> (14:05-15:25)	<b>Session #35</b>	<b>AD 1</b>

**Value Chains**

**Session Chair:** Badri Narayanan, Infinite Sum Modelling, LLC

<b>2:05-2:08pm</b> (14:05-14:08)	<b>Session Introduction</b>
<b>2:08-2:23pm</b> (14:08-14:23)	<b><u>Regional Economic Agreement (REI) and global value chains (GVCs). An empirical analysis of the SADC Customs Union (CU) using a computable general equilibrium model (CGEM).</u></b> (#7441) — Privilage Hove, Roma Tre University
<b>2:23-2:33pm</b> (14:23-14:33)	<b>Discussion</b>
<b>2:33-2:48pm</b> (14:33-14:48)	<b><u>The Impact of Digitalization on Global Manufacturing Value Chains: Regional Dynamics in the Age of Industry 4.0</u></b> (#7575) — Peiyu Xu, Auckland University of Technology
<b>2:48-2:58pm</b> (14:48-14:58)	<b>Discussion</b>
<b>2:58-3:13pm</b> (14:58-15:13)	<b><u>Decarbonization Pathways and Value Chain Restructuring in the Global Iron and Steel Industry</u></b> (#7535) — Zheng Dong, Tsinghua University
<b>3:13-3:23pm</b> (15:13-15:23)	<b>Discussion</b>
<b>3:23-3:25pm</b> (15:23-15:25)	<b>Session Closing</b>



FRIDAY, JUNE 27

## Detailed Schedule

Presenters should arrive to their assigned session room 10 minutes prior to the start of the session with their presentation on a USB drive in both PowerPoint and PDF formats. Times listed within each session are targets and may vary slightly.

**Looking for a paper?**

Search by ID# at: [www.gtap.org/events/conferences/2025/](http://www.gtap.org/events/conferences/2025/)

Time (CAT, UTC+2)	Event	Location
<b>2:05-3:50pm</b> (14:05-15:50)	<b>Session #36</b>	<b>AD 4</b>

***Model Development, Extension, and Evaluation***

**Session Chair:** Dominique van der Mensbrugghe, Center for Global Trade Analysis, Purdue University

<b>2:05-2:08pm</b> (14:05-14:08)	<b>Session Introduction</b>	
<b>2:08-2:23pm</b> (14:08-14:23)	<b><u>Capturing price level impacts of trade policies in a CGE model</u></b> (#7540) — Christine Arriola, OECD	
<b>2:23-2:33pm</b> (14:23-14:33)	<b>Discussion</b>	
<b>2:33-2:48pm</b> (14:33-14:48)	<b><u>Evaluating Inclusive Growth Models: Case for Pakistan</u></b> (#7416) — Jazib Mumtaz, SZABIST University Karachi <i>*Ken Pearson Travel Funding Award Recipient</i>	
<b>2:48-2:58pm</b> (14:48-14:58)	<b>Discussion</b>	
<b>2:58-3:13pm</b> (14:58-15:13)	<b><u>Incorporating endogenous technological change in the IMF-ENV model</u></b> (#7571) — Hugo Rojas-Romagosa, International Monetary Fund	
<b>3:13-3:23pm</b> (15:13-15:23)	<b>Discussion</b>	
<b>3:23-3:38pm</b> (15:23-15:38)	<b><u>Ecosystem services in an Environmental-Integrated Computable General Equilibrium (EI-CGE) model</u></b> (#7503) — Diana Ramirez, UCL	
<b>3:38-3:48pm</b> (15:38-15:48)	<b>Discussion</b>	
<b>3:48-3:50pm</b> (15:48-15:50)	<b>Session Closing</b>	

**FRIDAY, JUNE 27****Detailed Schedule**

Presenters should arrive to their assigned session room 10 minutes prior to the start of the session with their presentation on a USB drive in both PowerPoint and PDF formats. Times listed within each session are targets and may vary slightly.

**Looking for a paper?**

Search by ID# at: [www.gtap.org/events/conferences/2025/](http://www.gtap.org/events/conferences/2025/)

Time (CAT, UTC+2)	Event	Location
<b>2:05-3:50pm</b> (14:05-15:50)	<b>Session #37</b>	<b>AD 10</b>

***Climate Change Policy***

**Session Chair:** Etienne Berthet, Massachusetts Institute of Technology

<b>2:05-2:08pm</b> (14:05-14:08)	<b>Session Introduction</b>
<b>2:08-2:23pm</b> (14:08-14:23)	<b><u>Fossil fuel subsidy reforms, trade, and market power</u></b> (#7442) — Robin Argueyrolles, University of Basel
<b>2:23-2:33pm</b> (14:23-14:33)	<b>Discussion</b>
<b>2:33-2:48pm</b> (14:33-14:48)	<b><u>Provincial economic and air quality-related health impacts of China's potential partitioned carbon regulation</u></b> (#7464) — Xinyi Liu, Tsinghua University
<b>2:48-2:58pm</b> (14:48-14:58)	<b>Discussion</b>
<b>2:58-3:13pm</b> (14:58-15:13)	<b><u>Minimum energy taxes for climate and clean air in the EU: Environmental and distributional impacts</u></b> (#7492) — Toon Vandyck, KU Leuven
<b>3:13-3:23pm</b> (15:13-15:23)	<b>Discussion</b>
<b>3:23-3:38pm</b> (15:23-15:38)	<b><u>U.S. agricultural and biofuel markets: Short- and medium- term challenges and opportunities</u></b> (#7550) — Rayan Wolf, Department of Agricultural Economics, Purdue University
<b>3:38-3:48pm</b> (15:38-15:48)	<b>Discussion</b>
<b>3:48-3:50pm</b> (15:48-15:50)	<b>Session Closing</b>

**FRIDAY, JUNE 27****Detailed Schedule**

Presenters should arrive to their assigned session room 10 minutes prior to the start of the session with their presentation on a USB drive in both PowerPoint and PDF formats. Times listed within each session are targets and may vary slightly.

**Looking for a paper?**

Search by ID# at: [www.gtap.org/events/conferences/2025/](http://www.gtap.org/events/conferences/2025/)

Time (CAT, UTC+2)	Event	Location
<b>3:50-4:20pm</b> (15:50-16:20)	<b>Coffee Break</b>	<b>Foyer 1B</b>

<b>4:20-5:20pm</b> (16:20-17:20)	<b>Plenary Session and Closing Remarks</b>	<b>AD 12</b>
-------------------------------------	--	--------------

## ***Low Carbon Transitions: Implications and Responses for the African Fossil Fuels Industry***

**Session Chair:** **Stephen Karingi**, United Nations Economic Commission for Africa

<b>4:20-4:23pm</b> (16:20-16:23)	<b>Session Introduction</b>
<b>4:23-4:43pm</b> (16:23-16:43)	<b>Low Carbon Transitions: Implications and Responses for the African Fossil Fuels Industry</b> — <b>Mustafa Babiker</b> , Saudi Aramco
<b>4:43-5:03pm</b> (16:43-17:03)	<b>Discussion</b>
<b>5:03-5:05pm</b> (17:03-17:05)	<b>Session Closing</b>
<b>5:05-5:20pm</b> (17:05-17:20)	<b>Closing Remarks and 2026 GTAP Conference Preview</b> — <b>Channing Arndt</b> , Center for Global Trade Analysis, Department of Agricultural Economics, Purdue University

SATURDAY, JUNE 28

## Post-Conference Event

## General Information

Those who *registered and paid* to attend the day-trip to the Akagera National Park will experience Central Africa's largest protected wetland and the last remaining refuge for savannah-adapted species in Rwanda. While in Akagera, attendees will go on a game drive to experience animal sightings of lions, rhinos, elephants, buffalos, zebras, giraffes, leopards, and more.



Akagera National Park



## Important Notes

- Organizers were required to submit attendee names in advance of the trip for registration and entrance into the national park; therefore, **registrations are non-transferrable and late requests for attendance cannot be accommodated.**
- Attendees should bring a government-issued ID
- Attendees are responsible for holding/securing their own insurance prior to the trip in case of emergency.



## What to wear/bring?

- Clothing recommendations
  - Lightweight, neutral-colored clothing
  - Long-sleeved (or layered) shirts and pants
  - Close-toed shoes
  - Wide-brimmed hats
  - Sunglasses
- Other recommendations
  - Rain gear/ponchos (just in case)
  - Binoculars
  - Camera
  - Water (water will be provided with lunch only)



## Schedule

Time	Details
4:45am	<b>Group meets for departure</b> (Radisson Blu Hotel Lobby) ➡ <i>Promptness is required as transportation will not wait for late arrivals.</i>
5:00am	<b>Depart for Akagera National Park</b> (Radisson Blu Hotel lobby entrance) <ul style="list-style-type: none"> <li>— On the way, a quick stop will be made at the Imigongo Art Center for guides to collect lunches and give attendees a chance to get a quick snack and coffee if they wish (at the attendee's expense). The convoy will stop at the art center on the way back in the afternoon, so if there are souvenirs attendees would like to purchase, it is recommended to do so at that time. Both credit card and local currency are accepted.</li> </ul>
8:00-8:30am	<b>Arrive at Akagera National Park</b>
3:30pm (15:30)	<b>Depart Akagera National Park</b> <ul style="list-style-type: none"> <li>— On the way back, the convoy will stop at the Imigongo Art Center so attendees can purchase a snack, drink, or souvenirs (at their own expense).</li> </ul>
6:00-7:00pm (18:00-19:00)	<b>Arrive back at Radisson Blu Hotel</b>

## 29<sup>th</sup> Annual Conference on Global Economic Analysis



**Kyoto, Japan**  
June 17-19, 2026



**Kyoto International Conference Center**



**Global Trade Analysis Project**

Center for Global Trade Analysis  
Department of Agricultural Economics  
Purdue University



**京都大学**  
**KYOTO UNIVERSITY**

### Important Dates/Deadlines

Submissions	November 2025 – January 15, 2026
Abstract Review	mid-January – mid-February 2026
Status Notifications	late February 2026
Paper Submission	April 15, 2026

### Contact

Ginger Batta ([gbatta@purdue.edu](mailto:gbatta@purdue.edu))  
Principal Program Manager, Center for Global Trade Analysis  
Department of Agricultural Economics, Purdue University

## SESSION PARTICIPANT INDEX

Session organizers, chairs, presenters, and discussants should locate their name below to determine the session(s) in which they are scheduled. Numbers represent page numbers in the program, from which, session date, time, and location can be identified.

Abban, Stanley .....	48
Abdul-Jalil, Sawsan .....	56
Adesina, Akinwumi A.....	19
Agueny, Fatiha.....	31
Aguiar, Angel.....	45
Aki Lela Wilfried, Kouadio.....	31
Ali, Tariq .....	41
Alkassoum Sangare, Saadatou .....	62
Angermayr, Gianna Laura .....	26
Antimiani, Alessandro.....	20
Argueyrolles, Robin.....	65
Arin, Tijen .....	21
Arndt, Channing .....	19, 51, 66
Arriola, Christine.....	64
Asante-Poku, Nana Amma .....	39
Ashour, Sara .....	22
Babiker, Mustafa.....	66
Baldos, Uris Lantz .....	57, 61
Bekkers, Eddy .....	32, 38
Bella Ngadena, Marcellin Stephane .....	48
Berthet, Etienne.....	65
Bourne, Mike .....	41
Boysen, Ole.....	20
Boysen-Urban, Kirsten .....	43
Braaksma, Matthew.....	57
Calvin, Djiofack Zebaze .....	21
Cameron-Harp, Micah.....	61
Charlton, Diane.....	31
Chen, Chun-Yu.....	26
Chen, Shenjie.....	34
Chepeliev, Maksym.....	23, 30, 42, 47
Christoph, Joel .....	60
Corong, Erwin .....	22, 59
Countryman, Amanda M. ....	22, 31
Cui, Hao David.....	44
Deffo, Achille Carlos .....	45
Deger, Cagacan.....	28
Dellink, Rob .....	41
Delzeit, Ruth .....	28
Diallo, Souleymane Sadio.....	27, 62
Dlamini, Nsika Melusi.....	45
Dong, Zheng .....	63

## SESSION PARTICIPANT INDEX

Session organizers, chairs, presenters, and discussants should locate their name below to determine the session(s) in which they are scheduled. Numbers represent page numbers in the program, from which, session date, time, and location can be identified.

El Baouchari, Nabil .....	27
El Hajoui, Yassine .....	27
Elnour, Zuhail .....	28, 54
Espey, Amelia .....	58
Fasanu, Eyitemi .....	41
Ferrari, Emanuele .....	20, 25
Flaig, Dorothee .....	40, 43
Freund, Florian .....	58
Galindev, Ragchaasuren .....	21
Gatsoswe, Koketso .....	33
Gatto, Alessandro .....	47
Gbandi, Tchapo .....	55
Goebel, Theresa .....	32
Golub, Alla .....	30, 44
Gretton, Paul .....	44
Guepie, Geoffroy .....	55
Hailasilassie, Mussie Mindaye .....	38
Hertel, Thomas .....	59
Hillberry, Russell .....	22
Houessou, Martial .....	28
Hove, Privilage .....	63
Jensbye, Laerke .....	32
Kalaba, Mmatlou .....	39
Kamdem, Yvan Audrey .....	50
Kapuya, Tinashe .....	39
Karangwa, Mathias .....	21
Karingi, Stephen .....	19, 66
Kassa, Woubet .....	49
Kavallari, Aikaterini .....	43
Kharbouche, Ayoub .....	27
Khraizat, Zein .....	56
Kim, Yong-Gun .....	42, 60
Kinkpe, Thierry .....	26
Laichena, Joshua .....	25
Lanzi, Elisa .....	41
Lartey, Abraham .....	49
Lawson Sipoaka, Assion Adjahila Clavercio .....	43
Liu, Xinyi .....	65
Lopez Barrera, Emiliano .....	47
Ma, Zijie .....	30
Maliszewska, Maryla .....	20
Maskaeva, Asiya .....	62



## SESSION PARTICIPANT INDEX

Session organizers, chairs, presenters, and discussants should locate their name below to determine the session(s) in which they are scheduled. Numbers represent page numbers in the program, from which, session date, time, and location can be identified.

Maur, Jean-Christophe.....	49
Mburu, John .....	48
Mevel, Simon.....	33, 45, 55
Mfondoum, Valery .....	38
Mohammed, Abdelradi .....	25
Mold, Andrew .....	25, 51
Msafiri, Mgeni.....	40
Mukashov, Askar.....	25
Mukwaya, Rodgers .....	43, 48
Mumtaz, Jazib .....	64
Mwangi, Peter .....	54
Mwatu, Shadrack.....	40
Naliaka, Laura.....	33, 45
Narayanan, Badri .....	23, 63
Nechifor, Victor .....	40, 60, 62
Nenert, Claude.....	47
Ngamgo, Josiane .....	50
Nguenkwe, Ronie .....	50
Nichelatti, Enrico.....	50
Nitsch, Volker.....	50
Niwemahoro, Celine .....	45
Njeru, Tim .....	39
Ojeda, Maria Laura .....	57
Omoju, Oluwasola E. ....	62
Ouedraogo, Abdoul Karim Theophile .....	33
Pauw, Karl .....	39
Pelikan, Janine.....	56
Perdana, Sigit .....	57
Pereira, Maria Filipa Seara .....	54
Peszko, Grzegorz.....	23
Piva Asaloko, Prince .....	33
Puangchit, Pattawee .....	22
Ramirez, Diana.....	64
Rigoberte Carine, Koko A Bidias .....	55
Rojas-Romagosa, Hugo.....	26, 64
Sacht, Stephen.....	26
Sanchez, Bernabe .....	34
Sebahizi, Prudence .....	19
Shutes, Lindsay.....	44
Sibiya, Phelelani .....	40
Siddig, Khalid.....	27
Simola, Antti.....	31



## SESSION PARTICIPANT INDEX

Session organizers, chairs, presenters, and discussants should locate their name below to determine the session(s) in which they are scheduled. Numbers represent page numbers in the program, from which, session date, time, and location can be identified.

Sivamani, Ganesh .....	38
Springmann, Marco .....	58
Strutt, Anna .....	34
Takpara, Moukaila Mouzamilou .....	33
Thube, Sneha .....	23
Thurlow, James .....	39
Traore, Fousseini .....	19
van der Mensbrugghe, Dominique .....	42, 64
van Meijl, Hans .....	47
Van Zeist, Willem-Jan .....	59
Vandyck, Toon .....	65
Vogel, Tim .....	38
Wassie, Mengistu Alamneh .....	54
Weitzel, Matthias .....	42
Wolf, Rayan .....	65
Xiao, Jingliang .....	34
Xu, Peiyu .....	63
Yonezawa, Hidemichi .....	30
Yu, Wusheng .....	20, 32
Yuan, Mei .....	32
Zamani, Omid .....	56
Zidouemba, Patrice Relouende .....	48
Zondo, Bhekani .....	40, 54
Zong, Jian .....	58
Zorome, Arouna .....	28

## ANNUAL CONFERENCE ON GLOBAL ECONOMIC ANALYSIS

## PARTICIPANT LIST

Name	Affiliation	Country	Email
Abban, Stanley	Labone Senior High	Ghana	stanicorn@yahoo.com
Abdul-Jalil, Sawsan	Humboldt University	Germany	sawsan.abdul-jalil@hu-berlin.de
Adesina, Akinwumi A.	African Development Bank Group	Cote d'Ivoire	
Agueny, Fatiha	University Mohamed V	Morocco	fatiagueny@gmail.com
Aguiar, Angel	Center for Global Trade Analysis, Purdue University	United States	aaguiar@purdue.edu
Ajayi, Foluso	Ekiti State University	Nigeria	foluso.ajayi@eksu.edu.ng
Aki Lela Wilfried, Kouadio	University of Bouake	Cote d'Ivoire	akilelafried@gmail.com
Ali, Tariq	Jiangxi Agricultural University	China	agri45@gmail.com
Alkassoum Sangare, Saadatou	CAPEG - Public policies analysis Institute	Niger	sadalk2004@yahoo.fr
Angermayr, Gianna Laura	University of Basel	Switzerland	gianna.angermayr@unibas.ch
Anomat, Jecinta	Kenya Institute for Public Policy Research and Analysis	Kenya	jali@kippra.or.ke
Antimiani, Alessandro	European Commission, DG TRADE	Belgium	alessandro.antimiani@ec.europa.eu
Argueyrolles, Robin	University of Basel	Switzerland	robin.argueyrolles@unibas.ch
Arin, Tijen	The World Bank	United States	tarin@worldbank.org
Arndt, Channing	Center for Global Trade Analysis, Purdue University	United States	carndt@purdue.edu
Arriola, Christine	OECD	France	christine.arriola@oecd.org
Asante-Poku, Nana Amma	University of Ghana	Ghana	naasante-poku@ug.edu.gh
Ashour, Sara	Universitat Humboldt Zu Berlin	Egypt	sara.ashour@hu-berlin.de
Babiker, Mustafa	Saudi Aramco	Saudi Arabia	mustafa.babiker@aramco.com
Baldos, Uris Lantz	Center for Global Trade Analysis, Purdue University	United States	ubaldos@purdue.edu
Batta, Ginger	Center for Global Trade Analysis, Purdue University	United States	gbatta@purdue.edu
Bekkers, Eddy	World Trade Organization	Switzerland	eddy.bekkers@wto.org
Bella Ngadema, Marcellin Stephane	UNECA	Ethiopia	stephane.bellangadema@gmail.com
Berthet, Etienne	Massachusetts Institute of Technology	United States	etber@mit.edu
Birru, Tadele Mamo	Ethiopian Institute of Agricultural Research	Ethiopia	feked1983@gmail.com
Bisakaya, Timothy	The University of Edinburg	United Kingdom	bisakayat@gmail.com
Bourne, Mike	Department for Environment, Food and Rural Affairs	United Kingdom	michael.bourne@defra.gov.uk
Boysen, Ole	European Commission, Joint Research Centre (JRC)	Spain	ole.boysen@ucd.ie
Boysen-Urban, Kirsten	University of Hohenheim	Germany	kirsten.urban@uni-hohenheim.de
Braaksma, Matthew	University of Minnesota	United States	braak014@umn.edu
Calvin, Djiofack Zebaze	World Bank	Rwanda	djiofac@yahoo.fr
Cameron-Harp, Micah	Kansas State University Dept of Agricultural Economics	United States	mcameronharp@ksu.edu
Charlton, Diane	Montana State University	United States	diane.charlton@montana.edu
Chemingui, Mohamed Abdelbasset	UN Economic and Social Commission for Western Asia	Lebanon	cheminguim@un.org
Chen, Chun-Yu	University of Basel	Switzerland	chunyu.chen@unibas.ch
Chen, Shenjie	Office of the Chief Economist, Global Affairs Canada	Canada	shenjie.chen@international.gc.ca

## ANNUAL CONFERENCE ON GLOBAL ECONOMIC ANALYSIS

## PARTICIPANT LIST

Name	Affiliation	Country	Email
Chepeliev, Maksym	Center for Global Trade Analysis, Purdue University	United States	mchepeleli@purdue.edu
Christoph, Joel	European University Institute	Italy	joel.christoph@eui.eu
Corong, Erwin	Center for Global Trade Analysis, Purdue University	United States	ecorong@purdue.edu
Countryman, Amanda M.	Colorado State University	United States	amanda.countryman@colostate.edu
Cui, Hao (David)	Wageningen Economic Research	The Netherlands	david.cui@wur.nl
Davies, Rob		Zimbabwe	robdavieszim@gmail.com
Deffo, Achille Carlos	National Institute of Statistics	Cameroon	carlos_deffo@yahoo.fr
Deger, Cagacan	Economic and Social Research Institute	Ireland	cagacan.deger@esri.ie
Dellink, Rob	OECD	France	rob.dellink@oecd.org
Delzeit, Ruth	University of Basel	Switzerland	ruth.delzeit@unibas.ch
Diallo, Mariam	Ghent University	Belgium	mariam29diallo@gmail.com
Diallo, Souleymane Sadio	Centre Ivoirien de Recherches Economiques et Sociales	Cote d'Ivoire	souleymane.diallo@cires-ci.com
Diga, Girma Mamo	eiart123	Ethiopia	mamogirma2018@gmail.com
Diro, Samuel	Ethiopian Institute of Agricultural Research	Ethiopia	samueldiro85@gmail.com
Dlamini, Nsika Melusi	CSO	Swaziland	nsikamelusi@gmail.com
Dong, Zheng	Tsinghua University	China	dong-zheng@outlook.com
El Baouchari, Nabil	Mohammed V University in Rabat	Morocco	nabil.elbaouchari@um5s.net.ma
El Hajoui, Yassine	Mohammed V University in Rabat	Morocco	yassine.elhajoui@um5r.ac.ma
Elnour, Zuhail	Humboldt-Universität zu Berlin	Germany	zuhail.elnour@hu-berlin.de
Espey, Amelia	University of Hohenheim	Germany	amelia.espey@uni-hohenheim.de
Fasanu, Eyitemi	Covenant University	Nigeria	eyifasanu@gmail.com
Ferrari, Emanuele	European Commission - Joint Research Centre	Spain	emanuele.ferrari@ec.europa.eu
Flaig, Dorothee	University of Hohenheim	Germany	dorothee.flaign@uni-hohenheim.de
Freund, Florian	Thünen Institute of Market Analysis	Germany	florian.freund@thuenen.de
Galindev, Ragchaasuren	World Bank	United States	ragchaasuren.galindev@gmail.com
Gatsoswe, Koketso	University of Botswana	Botswana	gatsoswekoketso@yahoo.com
Gatto, Alessandro	Wageningen Social and Economic Research	The Netherlands	alessandro.gatto@wur.nl
Gbandi, Tchapo	University of Lome	Togo	gbanditchapo88@gmail.com
Goebel, Theresa	University of Bonn	Germany	theresa.goebel@ilr.uni-bonn.de
Golub, Alla	Center for Global Trade Analysis, Purdue University	United States	golub@purdue.edu
Gretton, Paul	Australian National University	Australia	gretton.paul@gmail.com
Grevulo, Joyce	MwAPATA Institute	Malawi	j.minofu@mwapata.mw
Guepie, Geoffroy	Economic Commission for Africa	Ethiopia	gguepie@yahoo.fr
Hailesilassie, Mussie Mindaye	Messina University	Italy	hlsmsm86h06z315x@studenti.unime.it
Hertel, Thomas	Center for Global Trade Analysis, Purdue University	United States	hertel@purdue.edu
Hillberry, Russell	Dept of Agricultural Economics, Purdue University	United States	rhillber@purdue.edu
Houessou, Martial	Humboldt University of Berlin	Germany	martial.houessou@hu-berlin.de

## PARTICIPANT LIST

Name	Affiliation	Country	Email
Hove, Privilage	Roma Tre University	Zimbabwe	hoveprivy11@gmail.com
Jensbye, Laerke	University of Copenhagen	Denmark	lgj@ifro.ku.dk
Jerie, Michael	GEMPACK	Australia	michael.jerie@vu.edu.au
Kajangwe, Antoine Marie	Ministry of Trade and Industry	Rwanda	
Kalaba, Mmatlou	Bureau for Food and Agricultural Policy (BFAP)	South Africa	mmatlou@bfap.co.za
Kaloi, Francis	KIPPRA	Kenya	fkaloi@kippra.or.ke
Kamdem, Yvan Audrey	University of Yaounde 2	Cameroon	yvanaudrey_kamdem@yahoo.fr
Kapuya, Tinashe	ANAPRI	Zambia	tinashe.kapuya@anapri.net
Karangwa, Mathias	National Bank of Rwanda	Rwanda	mkarangwa@bnr.rw
Karingi, Stephen	United Nations Economic Commission for Africa	Ethiopia	karingi@un.org
Kassa, Woubet	World Bank	United States	wkassa1@worldbank.org
Kavallari, Aikaterini	Food and Agriculture Organization, United Nations	Italy	aikaterini.kavallari@fao.org
Kharbouche, Ayoub	Mohammed V University in Rabat	Morocco	ayoub.kharbouche@um5s.net.ma
Khraizat, Zein	University College London	United Kingdom	z.m.khraizat@ucl.ac.uk
Kim, Yong-Gun	Yonsei University	South Korea	ygkim6007@gmail.com
Kinkpe, Thierry	Humboldt-University of Berlin	Germany	kinkpeth@hu-berlin.de
Kiptoo, Elvis	KIPPRA	Kenya	ekiptoo@kippra.or.ke
Kowalski, Przemyslaw	OECD	France	przemyslaw.kowalski@oecd.org
Laichena, Joshua	Kenya Institute for Public Policy Research and Analysis	Kenya	jlaichena@kippra.or.ke
Lanzi, Elisa	OECD Environment Directorate	France	elisa.lanzi@oecd.org
Lartey, Abraham	SOAS, University of London	United Kingdom	abrahamlartey06@gmail.com
Lawson Sipoaka, Assion Adjahila Clavericio	Institutions and Growth Research Laboratory	Cote d'Ivoire	piclavericio@yahoo.fr
Liu, Xinyi	Tsinghua University	China	xyliu24@mails.tsinghua.edu.cn
Lopez Barrera, Emiliano	Texas A&M University	United States	elopezba@tamu.edu
Lutz, Luisa	OECD	France	luisa.lutz@oecd.org
Ma, Zijie	University College London	United Kingdom	zijie.ma.21@ucl.ac.uk
Maliszewska, Maryla	The World Bank	United States	mmaliszewska@worldbank.org
Maniraguha, Faustin	National Bank of Rwanda	Rwanda	fmaniraguha@bnr.rw
Maskaeva, Asiya	University of Dodoma	Tanzania	asiyamask@hotmail.com
Maur, Jean-Christophe	The World Bank	United States	jmaur@worldbank.org
Mbugua, Mary	The Co-Operative University of Kenya	Kenya	mnmmariahmbugua@gmail.com
Mburu, John	Kenyatta University	Kenya	mburungugijn@gmail.com
McIntire, Holly	Center for Global Trade Analysis, Purdue University	United States	hcmcinti@purdue.edu
Mekuria, Haimanot Ass	United Nations Economic Commission for Africa	Ethiopia	assefamekuria@un.org
Mevel, Simon	United Nations Economic Commission for Africa	Ethiopia	mevel@un.org
Mfondoum, Valery	Freelance consultant	France	valerymfondoum@gmail.com
Mohammed, Abdelradi	University of Basel	Switzerland	a.mohammed@unibas.ch

## ANNUAL CONFERENCE ON GLOBAL ECONOMIC ANALYSIS

## PARTICIPANT LIST

Name	Affiliation	Country	Email
Mold, Andrew	Regional Office for Eastern Africa, UNECA	Rwanda	mold@un.org
Msafiri, Mgeni	University of Dar es Salaam	Tanzania	mgenimsafiri@gmail.com
Mukashov, Askar	IFPRI	United States	a.mukashov@cgiar.org
Mukwaya, Rodgers	United Nations Economic Commission for Africa	Rwanda	rmukwaya@uneca.org
Mumtaz, Jazib	SZABIST University Karachi	Pakistan	jazibkhan222@gmail.com
Mwangi, Peter	Humboldt-Universität zu Berlin	Germany	peter.mwangi@hu-berlin.de
Mwatu, Shadrack	KIPPRA	Kenya	muthamimwatu@gmail.com
Naliaka, Laura	United Nations Economic Commission for Africa	Ethiopia	laura.naliaka@un.org
Narayanan, Badri	Infinite Sum Modelling, LLC	United States	badri@infisum.com
Nechifor, Victor	Joint Research Centre	Spain	victor.nechifor@ec.europa.eu
Nenert, Claude	OECD	France	clauden.nenert@oecd.org
Ngamgo, Josiane	University of Yaounde 2, Cameroon	Cameroon	josianengamgo@gmail.com
Nguenke, Ronie	PKFokam Institute of Excellence	Cameroon	nguenke@gmail.com
Nichelatti, Enrico	University of Luxembourg	Luxembourg	enrico.nichelatti@uni.lu
Nitsch, Volker	TU Darmstadt	Germany	nitsch@vwl.tu-darmstadt.de
Niwemahoro, Celine	SCUB consultants	Kenya	celniwemahoro@gmail.com
Niyonsenga, Jean Claude	National Bank of Rwanda	Rwanda	jnyonsenga2@bnr.rw
Njeru, Tim	ANAPRI	Kenya	timothy.njagi@anapri.net
Ojeda, Maria Laura	University of Buenos Aires	Argentina	malauraajeda@gmail.com
Omoju, Oluwasola E.	National Institute for Legislative & Democratic Studies	Nigeria	solaomoju@gmail.com
Ouedraogo, Abdoul Karim Theophile	Université de Bourgogne	Burkina Faso	ouedraogotheophile5@gmail.com
Pangapanga-Phiri, Innocent	Lilongwe University of Agriculture & Natural Resources	Malawi	ipangapanga@luanar.ac.mw
Pelikan, Janine	Thünen Institute of Market Analysis	Germany	janine.pelikan@thuenen.de
Perdana, Sigit	Ecole Polytechnique Fédérale de Lausanne	Switzerland	sigit.perdana@epfl.ch
Pereira, Maria Filipa Seara	Center for Global Trade Analysis, Purdue University	United States	msearaep@purdue.edu
Peszko, Grzegorz	KAPSARC	Saudi Arabia	gpszko@gmail.com
Piva Asaloko, Prince	University of Kisangani	Dem Repub Congo	princepiva.05asaloko@gmail.com
Puangchit, Pattawee	Center for Global Trade Analysis, Purdue University	United States	ppuangch@purdue.edu
Ramirez, Diana	UCL	United Kingdom	diana.soto.20@ucl.ac.uk
Rigoberte Carine, Koko A Bidas	University of Yaounde II - Soa	Cameroon	kokokarine98@gmail.com
Rojas-Romagosa, Hugo	International Monetary Fund	United States	hrojas-romagosa@imf.org
Sacht, Stephen	Hamburg Institute of International Economics	Germany	sacht@hwwi.org
Sanchez, Bernabe	Bowecon.com	United Kingdom	bernabe@bowecon.com
Schmitz, Jan	European Commission - DG Trade	Belgium	jan.schmitz@ec.europa.eu
Sebahizi, Prudence	Ministry of Trade and Industry	Rwanda	
Shutes, Lindsay	Elevate Economics	United Kingdom	lindsayjshutes@gmail.com

## ANNUAL CONFERENCE ON GLOBAL ECONOMIC ANALYSIS

## PARTICIPANT LIST

Name	Affiliation	Country	Email
Sibiya, Phelanelani	National Agricultural Marketing Council	South Africa	psibiya@namc.co.za
Siddig, Khalid	International Food Policy Research Institute	Sudan	k.siddig@cgiar.org
Simola, Antti	European Commission - Joint Research Center	Spain	antti.simola@ec.europa.eu
Sivamani, Ganesh	CSEP	India	gsivamani@csep.org
Solomon, Tesfaye	Ethiopian Institute of Agricultural Research	Ethiopia	tesyeshi@gmail.com
Springmann, Marco	University of Oxford	United Kingdom	marco.springmann@ouce.ox.ac.uk
Strutt, Anna	University of Waikato	New Zealand	astrutt@waikato.ac.nz
Suzuki, Susumu	Economic and Social Research Institute, Cabinet Office	Japan	susumu.suzuki.j8b@cao.go.jp
Takpara, Moukaila Mouzamilou	United Nations Economic Commission for Africa	Ethiopia	takpara2025@gmail.com
Tao, Gan	Peking University	China	2401112464@stu.pku.edu.cn
Thube, Sneha	International Monetary Fund	United States	sthube@imf.org
Thurlow, James	International Food Policy Research Institute	United States	j.thurlow@cgiar.org
Traore, Fousseini	International Food Policy Research Institute (IFPRI)	Senegal	fousseini.traore@cgiar.org
Tuyishimire, Consolee	Rwanda Institute of Cooperatives, Entrepreneurship and Microfinance	Rwanda	consoleetuyishimir@gmail.com
van der Mensbrugghe, Dominique	Center for Global Trade Analysis, Purdue University	United States	vandermd@purdue.edu
van Meijl, Hans	Wageningen Social and Economic Research	The Netherlands	hans.vanmeijl@wur.nl
Van Zeist, Willem-Jan	Wageningen Social and Economic Research	The Netherlands	willem-jan.vanzeist@wur.nl
Vandeyck, Toon	KU Leuven	Belgium	toon.vandeyck@kuleuven.be
Vogel, Tim	German Institute of Development and Sustainability	Germany	tim.vogel@idos-research.de
Wakhungu, Hillary	Kenya Institute for Public Policy Research and Analysis	Kenya	hwakhungu@kippra.or.ke
Wassie, Mengistu Alamneh	Bonn University	Germany	s72mwass@uni-bonn.de
Weitzel, Matthias	European Commission - Joint Research Centre	Spain	matthias.weitzel@ec.europa.eu
Weng, Yuyan	Tsinghua University	China	wengyuyan@tsinghua.edu.cn
Wolf, Rayan	Dept of Agricultural Economics, Purdue University	United States	wolf197@purdue.edu
Xiao, Jingliang	Office of the Chief Economist, Global Affairs Canada	Canada	jingliang.xiao@international.gc.ca
Xie, Wei	China Center for Agricultural Policy, Peking University	China	xiewei.ccap@pku.edu.cn
Xu, Peiyu	Auckland University of Technology	New Zealand	xupeiyu66@qq.com
Yonezawa, Hidemichi	OECD	France	hidemichi.yonezawa@oecd.org
Yu, Wusheng	University of Copenhagen	Denmark	wusheng@ifro.ku.dk
Yuan, Mei	MIT Center for Sustainability Science and Strategy	United States	yuanmei@mit.edu
Zamani, Omid	Thuenen Institute	Germany	omid.zamani@thuenen.de
Zhang, Da	Tsinghua University, China	China	zhangda@mail.tsinghua.edu.cn
Zidouemba, Patrice Relouende	N. BONI University	Burkina Faso	patrice.zidouemba@gmail.com
Zondo, Bhokani	National Agricultural Marketing Council	South Africa	bzondo@namc.co.za
Zong, Jian	Peking University	China	jianzong@stu.pku.edu.cn
Zorome, Arouna	Clermont Auvergne University	France	arouna.zorome.phd@gmail.com

## GTAP UNIVERSITY (GTAP-U)

GTAP-U is the formal education initiative of the Global Trade Analysis Project (GTAP) and builds on the Center for Global Trade Analysis' decades of teaching experience in the field of global economic analysis. The goal of GTAP-U is to expand access and improve educational and career opportunities for students and professionals, worldwide.

GTAP-U offers courses on computable general equilibrium (CGE) modeling at the introductory, intermediate, and advanced levels, with specialized topics for in-depth policy analysis and advanced economic models. CGE models are widely used in the public and private sectors to inform strategic economic policy decisions—among the most prominent are trade, fiscal, and environmental policies. As such, they garner strong interest from national and international organizations, government agencies, consultancies, as well as research institutions.

GTAP-U delivers high-quality theoretical and practical training in applied CGE modeling using the GTAP suite of models and data bases. Aimed towards building human capital in global economic analysis, GTAP-U courses help develop critical skills for independent economic research; connect individuals with diverse backgrounds and expertise across the globe; provide mentoring opportunities for training and capacity-building in institutions; and generate economic discussions that often lead to research opportunities in the global economic analysis community.

### Teaching Opportunities with GTAP-U



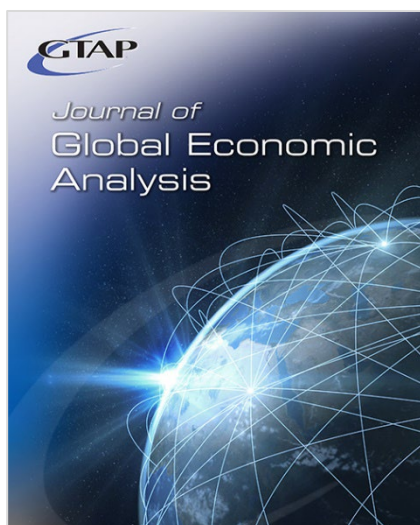
*Calling all esteemed academicians and professionals in the field of economics!*

Are you interested in partnering with GTAP-U to develop and offer a course?

The Center for Global Trade Analysis invites you to become part of GTAP-U! From initial concept to polished delivery, GTAP-U's streamlined course development process and comprehensive support will empower you to design engaging courses that reflect your unique teaching style, while harnessing the latest advancements in online learning. As a GTAP-U instructor, you will be part of a vibrant community of like-minded professionals, engage in meaningful discussions, and collaborate with peers from around the globe.

### More Information and Course Catalog

For more information and the complete course catalog, please visit: [www.gtap.org/gtap-u/](http://www.gtap.org/gtap-u/).

***“Advancing Applied General Equilibrium Modeling”***

ISSN: 2377-2999

The *Journal of Global Economic Analysis* (JGEA):

- provides an open access, peer-reviewed platform for publication and dissemination of innovations in applied general equilibrium (AGE) modeling
- publishes developments in theory, data, statistical analysis, methods, and teaching
- enhances the credibility of AGE modeling by requiring replication of results during the peer-review process and, when possible, publication of new model code and data on the journal's website
- builds on and extends the high-impact, peer-reviewed GTAP Technical Paper Series
- is ranked in the best quartile of Economics and Econometrics journals by major ranking agencies and is included in leading citation databases

The JGEA is ranked 139 out of 719 economics and econometrics journals in the Scimago Journal Rankings, 143 out of 716 journals in the Scopus rankings, and 72 out of 3042 periodicals in the Research Papers in Economics (RePEc) Simple Impact Factor Rankings.

Authors interested in submitting their work for publication, should consult the JGEA website for further details on focus, scope, and author guidelines.

**Editors:**

- **Thomas Hertel** (Purdue University)
- **Niven Winchester** (Auckland University of Technology)

**Associate Editors:**

- **Eddy Bekkers** (World Trade Organization)
- **Roberto Roson** (Ca' Foscari University of Venice & Loyola Andalusia University)
- **Anna Strutt** (University of Waikato)
- **Da Zhang** (Tsinghua University)

**Editorial Advisory Board:**

- |  |  |
|--|--|
| — <b>Kym Anderson</b> (Australian National University)       | — <b>David Hummels</b> (Purdue University)                                 |
| — <b>Christoph Böhlinger</b> (University of Oldenburg)       | — <b>Sébastien Jean</b> (CEPII)  |
| — <b>Peter Dixon</b> (Victoria University)                   | — <b>Kenichi Kawasaki</b> (National Graduate Institute for Policy Studies) |
| — <b>Thibault Fally</b> (University of California-Berkeley)  | — <b>James Markusen</b> (University of Colorado-Boulder)                   |
| — <b>Karen Fisher-Vanden</b> (Pennsylvania State University) | — <b>Thomas Rutherford</b> (University of Wisconsin-Madison)               |
| — <b>Joseph Francois</b> (University of Bern)                | — <b>Jan van Heerden</b> (University of Pretoria)                          |
| — <b>Pinelopi Goldberg</b> (Yale University)                 | — <b>Tony Venables</b> (University of Oxford)                              |
| — <b>Eduardo Haddad</b> (University of São Paulo)            |  |

**More Information**

For more information, please visit: [www.jgea.org](http://www.jgea.org)